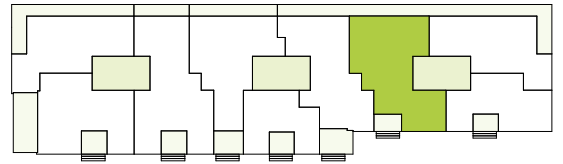


# 4.5 Zimmer-Wohnung

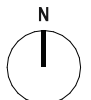
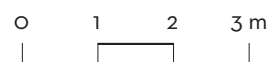
Seestrasse 295 A | 8804 Au ZH



Wohnungsnr.	SEE295A_10101	Loggia / Balkon	23.2 m <sup>2</sup>
Geschoss	1.OG	Raumhöhe	2.50 m
Wohnfläche	113.9 m <sup>2</sup>	Keller	6.1 m <sup>2</sup>



1:100



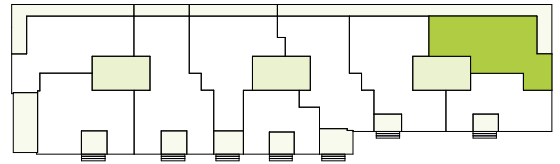
A4

# 3.5 Zimmer-Wohnung

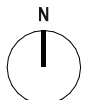
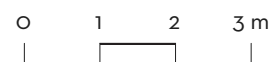
Seestrasse 295 A | 8804 Au ZH



Wohnungsnr.	SEE295A_10102	Loggia / Balkon	33.3 m <sup>2</sup>
Geschoss	1.OG	Raumhöhe	2.50 m
Wohnfläche	89.7 m <sup>2</sup>	Keller	8.0 m <sup>2</sup>



1:100



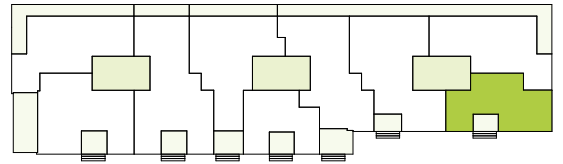
A4

## 2.5 Zimmer-Wohnung

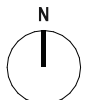
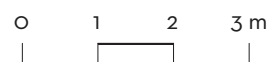
Seestrasse 295 A | 8804 Au ZH



Wohnungsnr.	SEE295A_10103	Loggia / Balkon	7.6 m <sup>2</sup>
Geschoss	1.OG	Raumhöhe	2.50 m
Wohnfläche	68.3 m <sup>2</sup>	Keller	5.1 m <sup>2</sup>



1:100



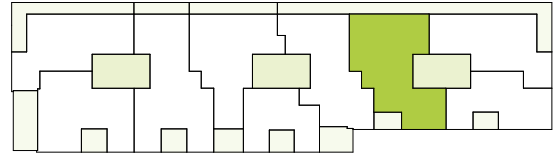
A4

# 4.5 Zimmer-Wohnung

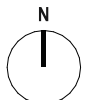
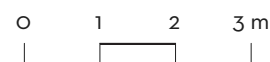
Seestrasse 295 A | 8804 Au ZH



Wohnungsnr.	SEE295A_10201	Loggia / Balkon	23.2 m <sup>2</sup>
Geschoss	2.OG	Raumhöhe	2.50 m
Wohnfläche	113.9 m <sup>2</sup>	Keller	6.1 m <sup>2</sup>



1:100



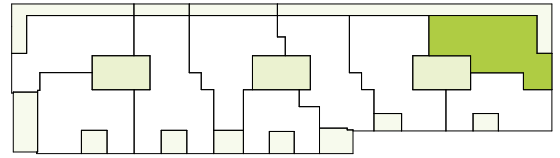
A4

# 3.5 Zimmer-Wohnung

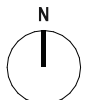
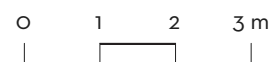
Seestrasse 295 A | 8804 Au ZH



Wohnungsnr.	SEE295A_10202	Loggia / Balkon	33.3 m <sup>2</sup>
Geschoss	2.OG	Raumhöhe	2.50 m
Wohnfläche	89.7 m <sup>2</sup>	Keller	8.0 m <sup>2</sup>



1:100



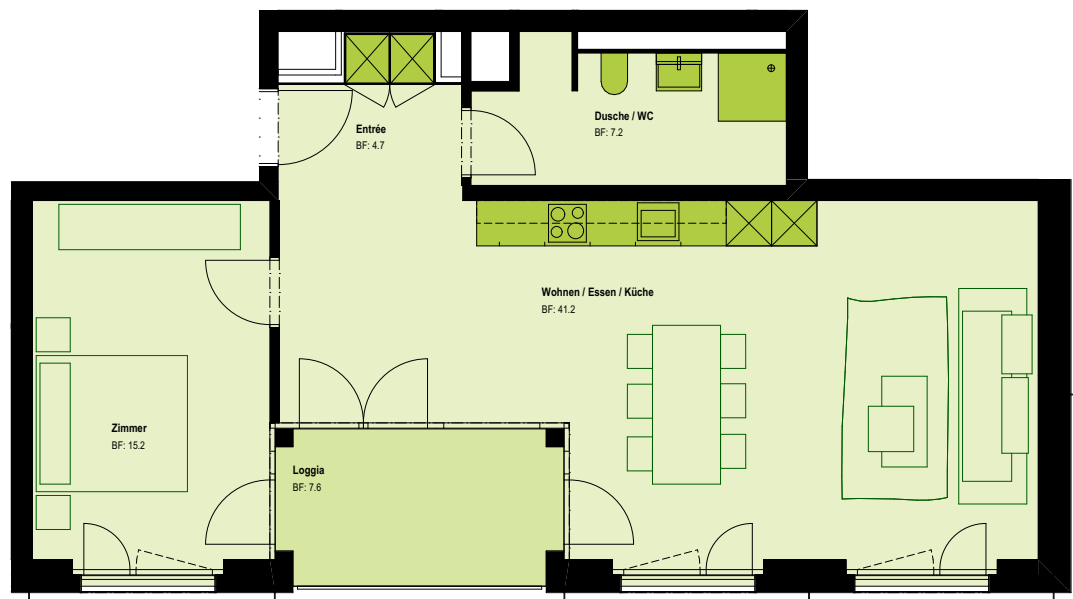
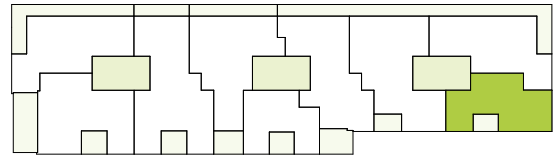
A4

## 2.5 Zimmer-Wohnung

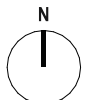
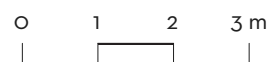
Seestrasse 295 A | 8804 Au ZH



Wohnungsnr.	SEE295A_10203	Loggia / Balkon	7.6 m <sup>2</sup>
Geschoss	2.OG	Raumhöhe	2.50 m
Wohnfläche	68.3 m <sup>2</sup>	Keller	5.1 m <sup>2</sup>



1:100



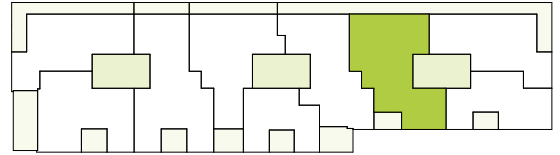
A4

# 4.5 Zimmer-Wohnung

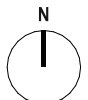
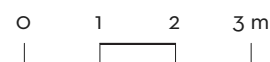
Seestrasse 295 A | 8804 Au ZH



Wohnungsnr.	SEE295A_10301	Loggia / Balkon	23.2 m <sup>2</sup>
Geschoss	3.OG	Raumhöhe	2.50 m
Wohnfläche	113.9 m <sup>2</sup>	Keller	6.0 m <sup>2</sup>



1:100



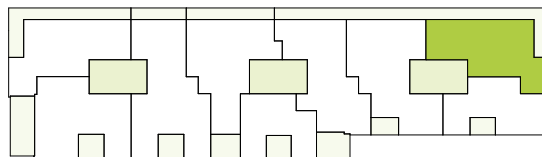
A4

# 3.5 Zimmer-Wohnung

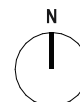
Seestrasse 295 A | 8804 Au ZH



Wohnungsnr.	SEE295A_10302	Loggia / Balkon	33.3 m <sup>2</sup>
Geschoss	3.OG	Raumhöhe	2.50 m
Wohnfläche	89.7 m <sup>2</sup>	Keller	7.7 m <sup>2</sup>



1:100



A4

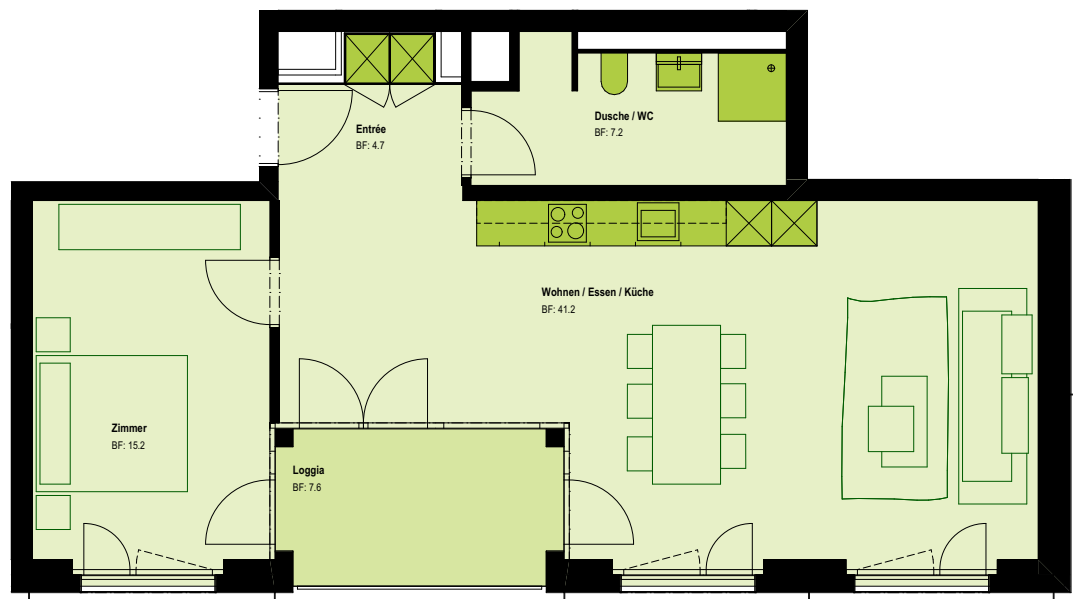
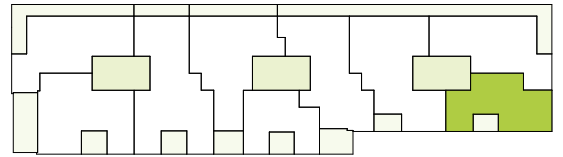


## 2.5 Zimmer-Wohnung

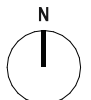
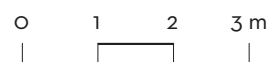
Seestrasse 295 A | 8804 Au ZH



Wohnungsnr.	SEE295A_10303	Loggia / Balkon	7.6 m <sup>2</sup>
Geschoss	3.OG	Raumhöhe	2.50 m
Wohnfläche	68.3 m <sup>2</sup>	Keller	5.1 m <sup>2</sup>



1:100



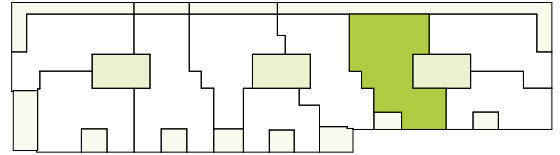
A4

# 4.5 Zimmer-Wohnung

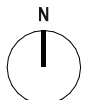
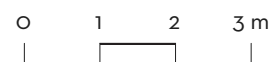
Seestrasse 295 A | 8804 Au ZH



Wohnungsnr.	SEE295A_10401	Loggia / Balkon	23.2 m <sup>2</sup>
Geschoss	4.OG	Raumhöhe	2.50 m
Wohnfläche	113.9 m <sup>2</sup>	Keller	5.9 m <sup>2</sup>



1:100



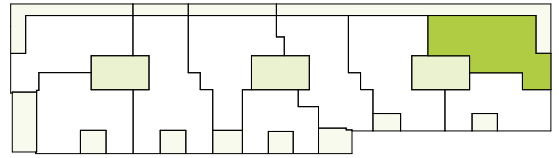
A4

# 3.5 Zimmer-Wohnung

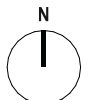
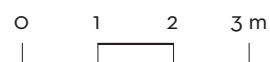
Seestrasse 295 A | 8804 Au ZH



Wohnungsnr.	SEE295A_10402	Loggia / Balkon	33.3 m <sup>2</sup>
Geschoss	4.OG	Raumhöhe	2.50 m
Wohnfläche	89.7 m <sup>2</sup>	Keller	7.9 m <sup>2</sup>



1:100



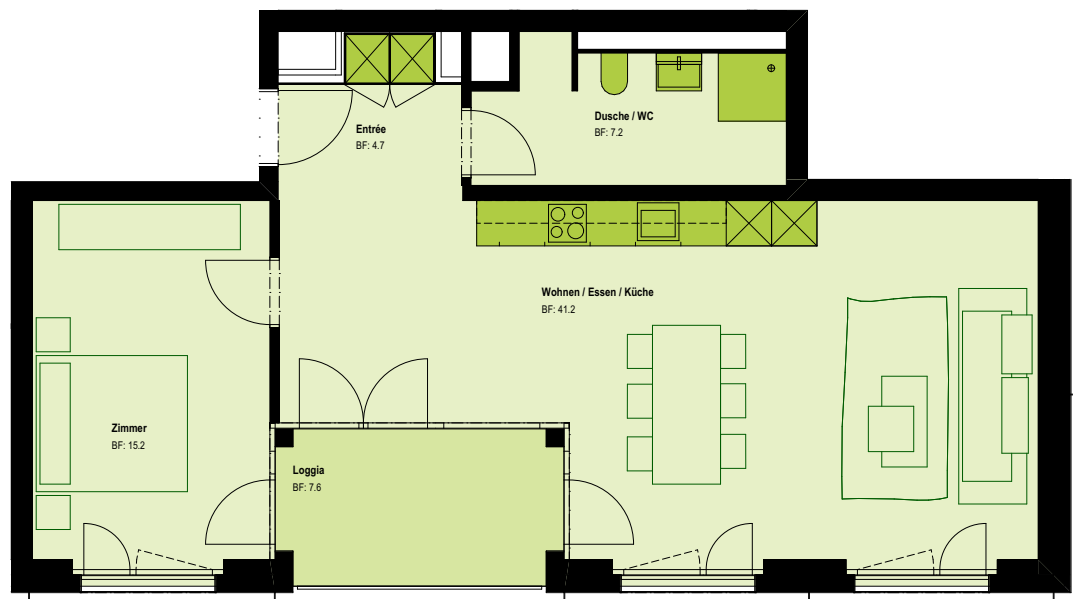
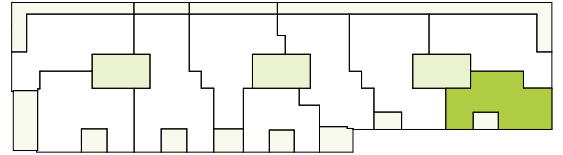
A4

## 2.5 Zimmer-Wohnung

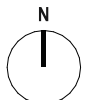
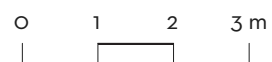
Seestrasse 295 A | 8804 Au ZH



Wohnungsnr.	SEE295A_10403	Loggia / Balkon	7.6 m <sup>2</sup>
Geschoss	4.OG	Raumhöhe	2.50 m
Wohnfläche	68.3 m <sup>2</sup>	Keller	5.1 m <sup>2</sup>



1:100



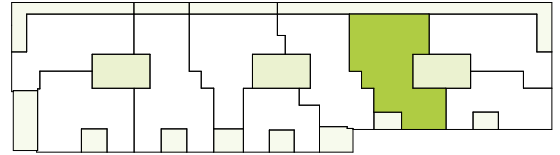
A4

# 4.5 Zimmer-Wohnung

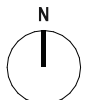
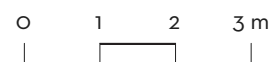
Seestrasse 295 A | 8804 Au ZH



Wohnungsnr.	SEE295A_10501	Loggia / Balkon	23.2 m <sup>2</sup>
Geschoss	5.OG	Raumhöhe	2.50 m
Wohnfläche	113.9 m <sup>2</sup>	Keller	6.6 m <sup>2</sup>



1:100



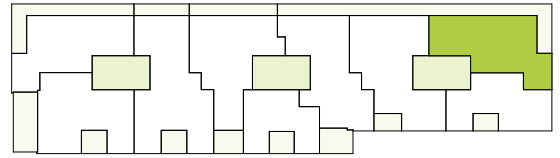
A4

# 3.5 Zimmer-Wohnung

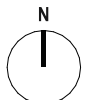
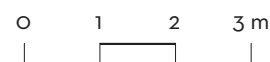
Seestrasse 295 A | 8804 Au ZH



Wohnungsnr.	SEE295A_10502	Loggia / Balkon	33.3 m <sup>2</sup>
Geschoss	5.OG	Raumhöhe	2.50 m
Wohnfläche	89.7 m <sup>2</sup>	Keller	7.9 m <sup>2</sup>



1:100



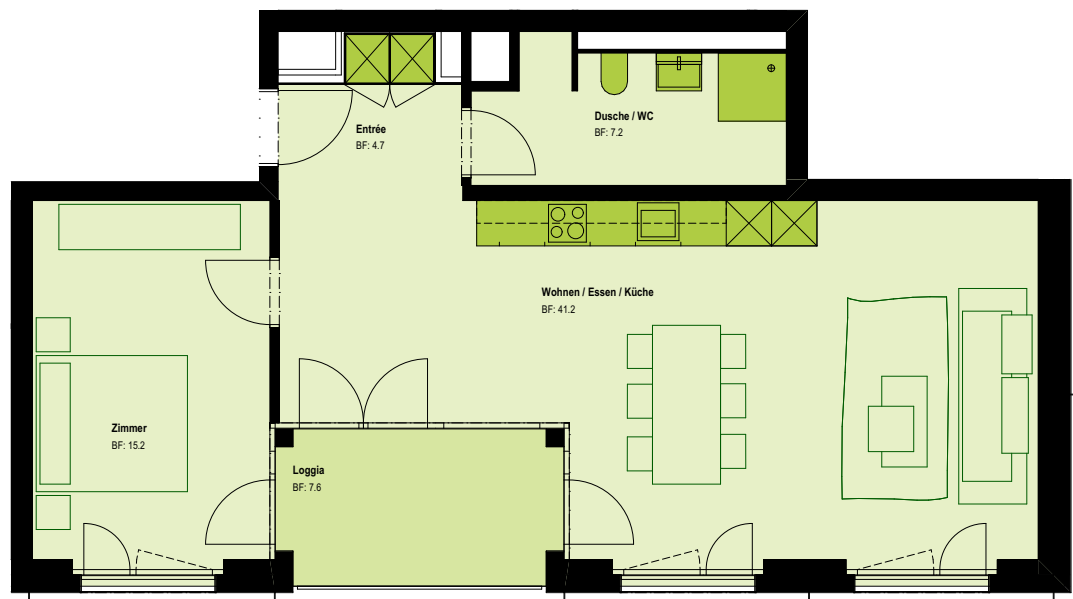
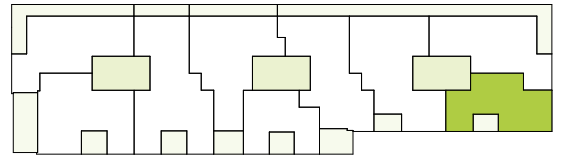
A4

## 2.5 Zimmer-Wohnung

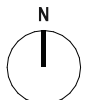
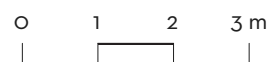
Seestrasse 295 A | 8804 Au ZH



Wohnungsnr.	SEE295A_10503	Loggia / Balkon	7.6 m <sup>2</sup>
Geschoss	5.OG	Raumhöhe	2.50 m
Wohnfläche	68.3 m <sup>2</sup>	Keller	5.1 m <sup>2</sup>



1:100



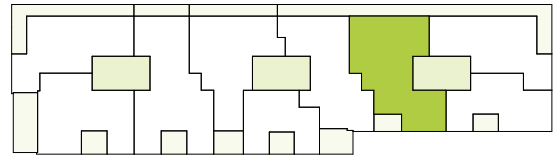
A4

# 4.5 Zimmer-Wohnung

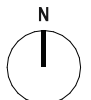
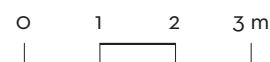
Seestrasse 295 A | 8804 Au ZH



Wohnungsnr.	SEE295A_10601	Loggia / Balkon	23.2 m <sup>2</sup>
Geschoss	6.OG	Raumhöhe	2.50 m
Wohnfläche	113.9 m <sup>2</sup>	Keller	5.5 m <sup>2</sup>



1:100



A4

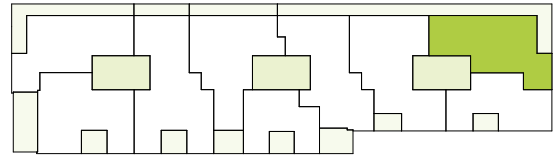


# 3.5 Zimmer-Wohnung

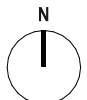
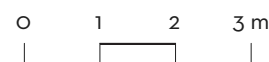
Seestrasse 295 A | 8804 Au ZH



Wohnungsnr.	SEE295A_10602	Loggia / Balkon	33.3 m <sup>2</sup>
Geschoss	6.OG	Raumhöhe	2.50 m
Wohnfläche	89.7 m <sup>2</sup>	Keller	7.9 m <sup>2</sup>



1:100



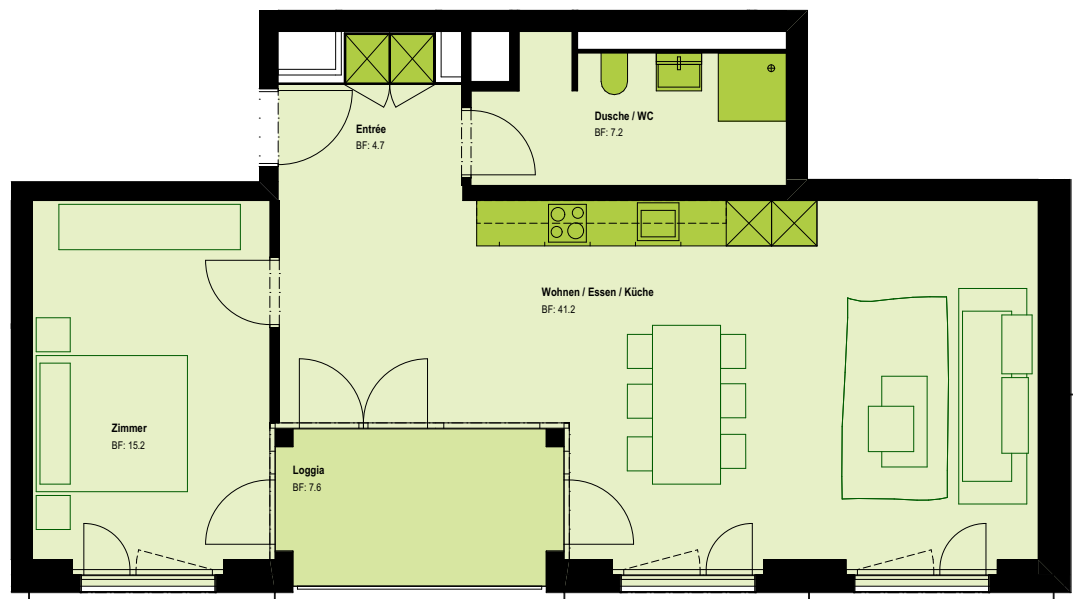
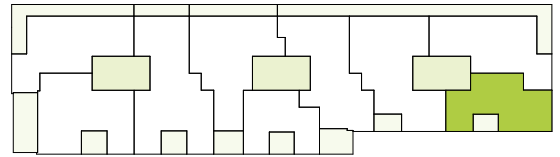
A4

## 2.5 Zimmer-Wohnung

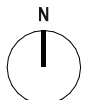
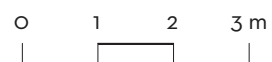
Seestrasse 295 A | 8804 Au ZH



Wohnungsnr.	SEE295A_10603	Loggia / Balkon	7.6 m <sup>2</sup>
Geschoss	6.OG	Raumhöhe	2.50 m
Wohnfläche	68.3 m <sup>2</sup>	Keller	5.0 m <sup>2</sup>



1:100



A4

# 4.5 Zimmer-Wohnung

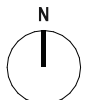
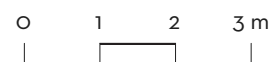
Seestrass 295 B | 8804 Au ZH



Wohnungsnr.	SEE295B_10101	Loggia / Balkon	28.0 m <sup>2</sup>
Geschoss	1.OG	Raumhöhe	2.50 m
Wohnfläche	102.7 m <sup>2</sup>	Keller	5.5 m <sup>2</sup>



1:100



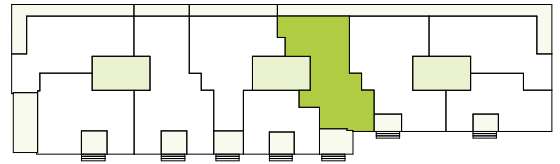
A4

# 4.5 Zimmer-Wohnung

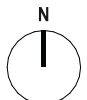
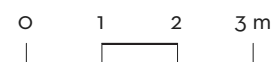
Seestrasse 295 B | 8804 Au ZH



Wohnungsnr.	SEE295B_10102	Loggia / Balkon	24.9 m <sup>2</sup>
Geschoss	1.OG	Raumhöhe	2.50 m
Wohnfläche	101.3 m <sup>2</sup>	Keller	5.4 m <sup>2</sup>



1:100



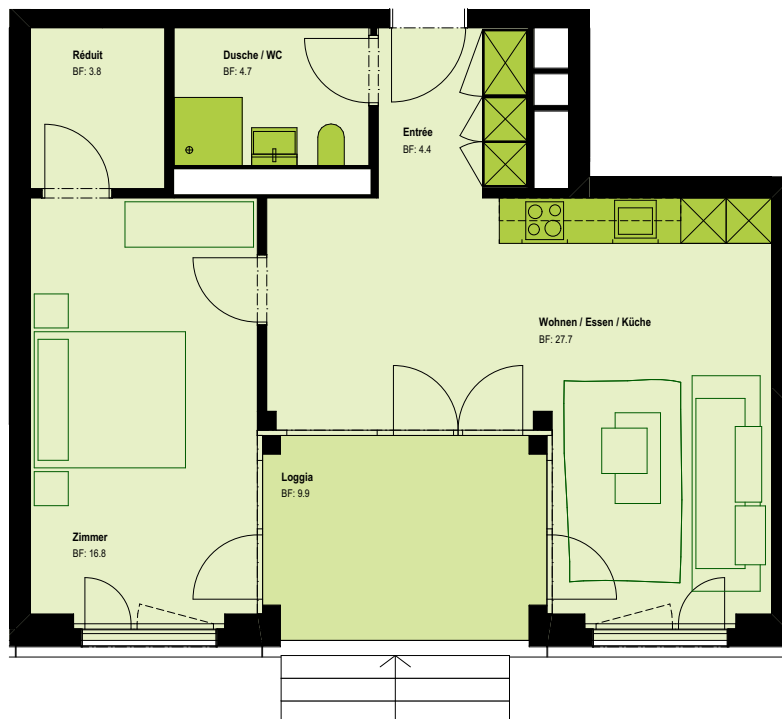
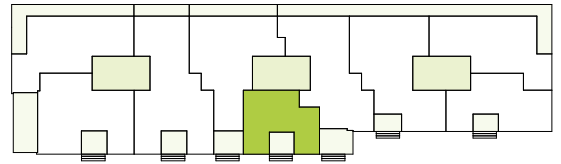
A4

## 2.5 Zimmer-Wohnung

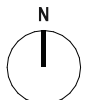
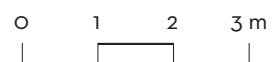
Seestrasse 295 B | 8804 Au ZH



Wohnungsnr.	SEE295B_10103	Loggia / Balkon	9.9 m <sup>2</sup>
Geschoss	1.OG	Raumhöhe	2.50 m
Wohnfläche	57.4 m <sup>2</sup>	Keller	5.0 m <sup>2</sup>



1:100



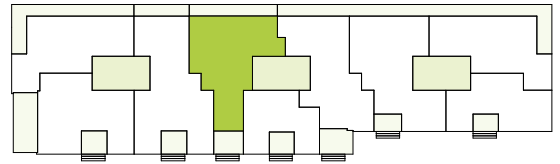
A4

# 4.5 Zimmer-Wohnung

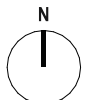
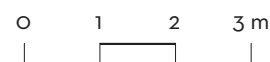
Seestrasse 295B | 8804 Au ZH



Wohnungsnr.	SEE295B_10201	Loggia / Balkon	28.0 m <sup>2</sup>
Geschoss	2.OG	Raumhöhe	2.50 m
Wohnfläche	102.7 m <sup>2</sup>	Keller	5.2 m <sup>2</sup>



1:100



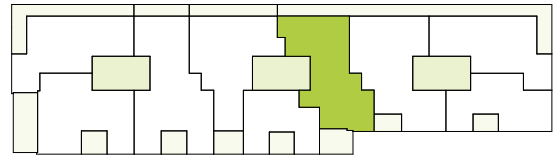
A4

# 4.5 Zimmer-Wohnung

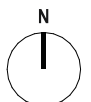
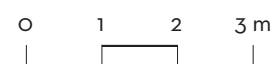
Seestrasse 295 B | 8804 Au ZH



Wohnungsnr.	SEE295B_10202	Loggia / Balkon	24.9 m <sup>2</sup>
Geschoss	2.OG	Raumhöhe	2.50 m
Wohnfläche	101.3 m <sup>2</sup>	Keller	5.8 m <sup>2</sup>



1:100



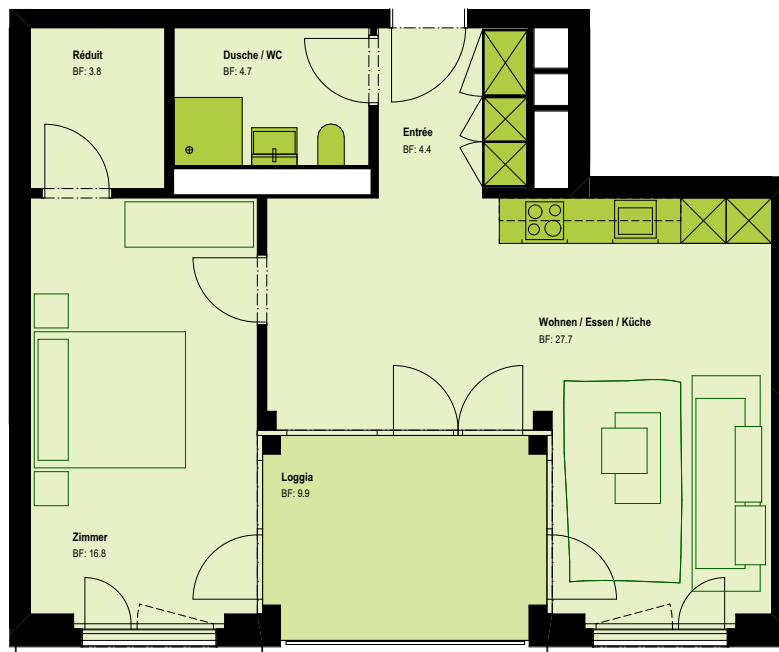
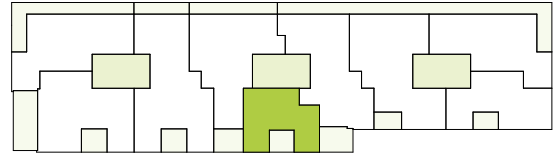
A4

## 2.5 Zimmer-Wohnung

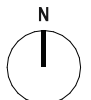
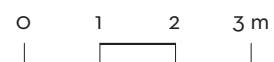
Seestrasse 295 B | 8804 Au ZH



Wohnungsnr.	SEE295B_10203	Loggia / Balkon	9.9 m <sup>2</sup>
Geschoss	2.OG	Raumhöhe	2.50 m
Wohnfläche	57.4 m <sup>2</sup>	Keller	5.0 m <sup>2</sup>



1:100



A4

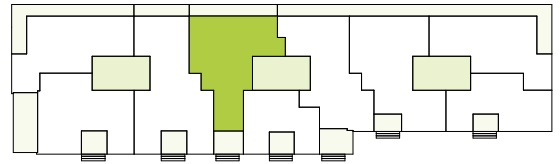


# 4.5 Zimmer-Wohnung

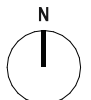
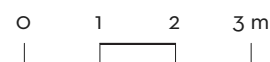
Seestrasse 295 B | 8804 Au ZH



Wohnungsnr.	SEE295B_10301	Loggia / Balkon	28.0 m <sup>2</sup>
Geschoss	3.OG	Raumhöhe	2.50 m
Wohnfläche	102.7 m <sup>2</sup>	Keller	5.0 m <sup>2</sup>



1:100



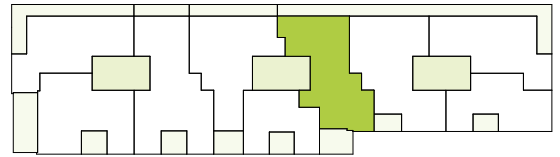
A4

# 4.5 Zimmer-Wohnung

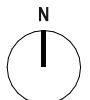
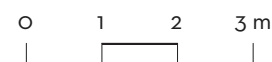
Seestrasse 295 B | 8804 Au ZH



Wohnungsnr.	SEE295B_10302	Loggia / Balkon	24.9 m <sup>2</sup>
Geschoss	3.OG	Raumhöhe	2.50 m
Wohnfläche	101.3 m <sup>2</sup>	Keller	6.1 m <sup>2</sup>



1:100



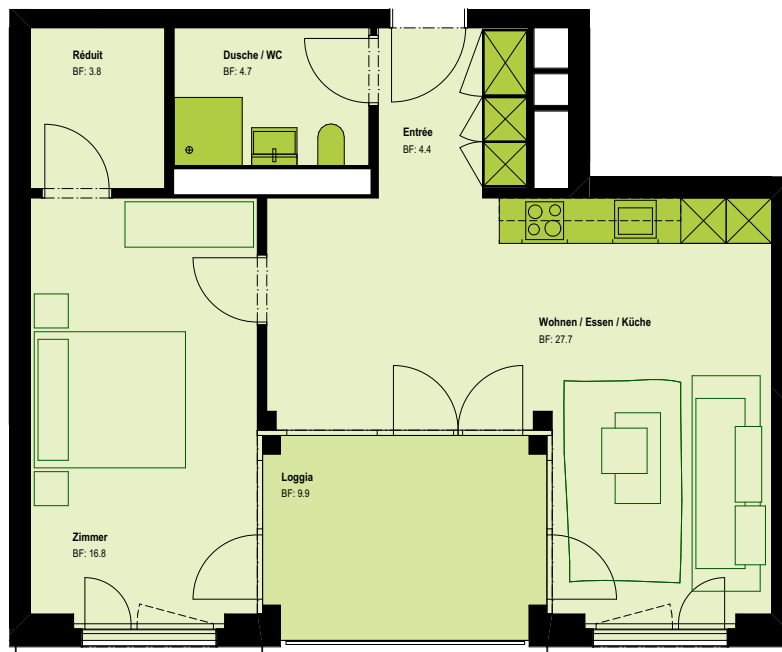
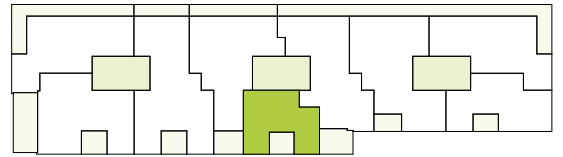
A4

## 2.5 Zimmer-Wohnung

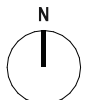
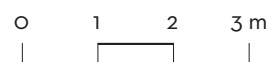
Seestrasse 295 B | 8804 Au ZH



Wohnungsnr.	SEE295B_10303	Loggia / Balkon	9.9 m <sup>2</sup>
Geschoss	3.OG	Raumhöhe	2.50 m
Wohnfläche	57.4 m <sup>2</sup>	Keller	5.0 m <sup>2</sup>



1:100



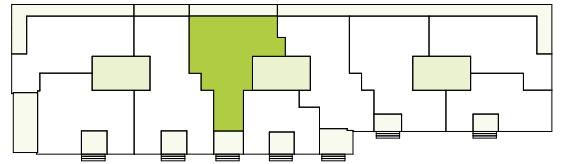
A4

# 4.5 Zimmer-Wohnung

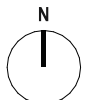
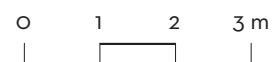
Seestrasse 295 B | 8804 Au ZH



Wohnungsnr.	SEE295B_10401	Loggia / Balkon	28.0 m <sup>2</sup>
Geschoss	4.OG	Raumhöhe	2.50 m
Wohnfläche	102.7 m <sup>2</sup>	Keller	5.0 m <sup>2</sup>



1:100



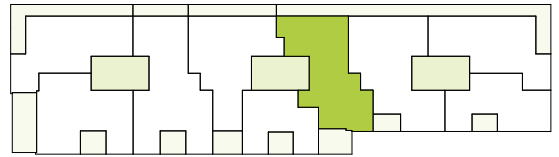
A4

# 4.5 Zimmer-Wohnung

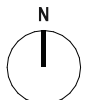
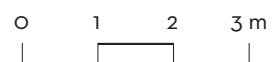
Seestrasse 295 B | 8804 Au ZH



Wohnungsnr.	SEE295B_10402	Loggia / Balkon	24.9 m <sup>2</sup>
Geschoss	4.OG	Raumhöhe	2.50 m
Wohnfläche	101.3 m <sup>2</sup>	Keller	8.2 m <sup>2</sup>



1:100



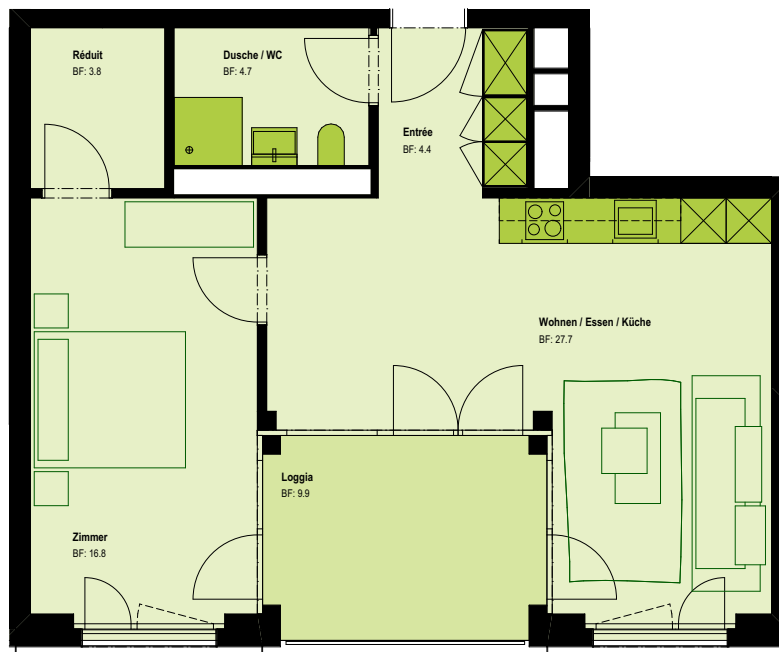
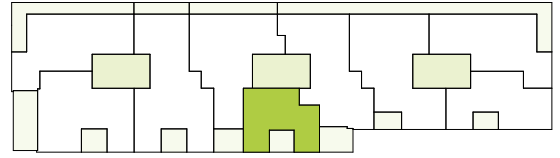
A4

## 2.5 Zimmer-Wohnung

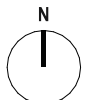
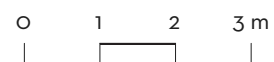
Seestrasse 295 B | 8804 Au ZH



Wohnungsnr.	SEE295B_10403	Loggia / Balkon	9.9 m <sup>2</sup>
Geschoss	4.OG	Raumhöhe	2.50 m
Wohnfläche	57.4 m <sup>2</sup>	Keller	5.0 m <sup>2</sup>



1:100



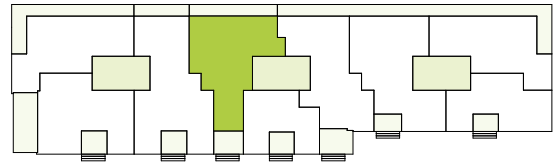
A4

# 4.5 Zimmer-Wohnung

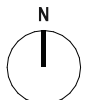
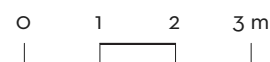
Seestrasse 295 B | 8804 Au ZH



Wohnungsnr.	SEE295B_10501	Loggia / Balkon	28.0 m <sup>2</sup>
Geschoss	5.OG	Raumhöhe	2.50 m
Wohnfläche	102.7 m <sup>2</sup>	Keller	5.0 m <sup>2</sup>



1:100



A4

# 4.5 Zimmer-Wohnung

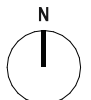
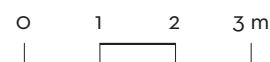
Seestrasse 295 B | 8804 Au ZH



Wohnungsnr.	SEE295B_10502	Loggia / Balkon	24.9 m <sup>2</sup>
Geschoss	5.OG	Raumhöhe	2.50 m
Wohnfläche	101.3 m <sup>2</sup>	Keller	5.0 m <sup>2</sup>



1:100



A4

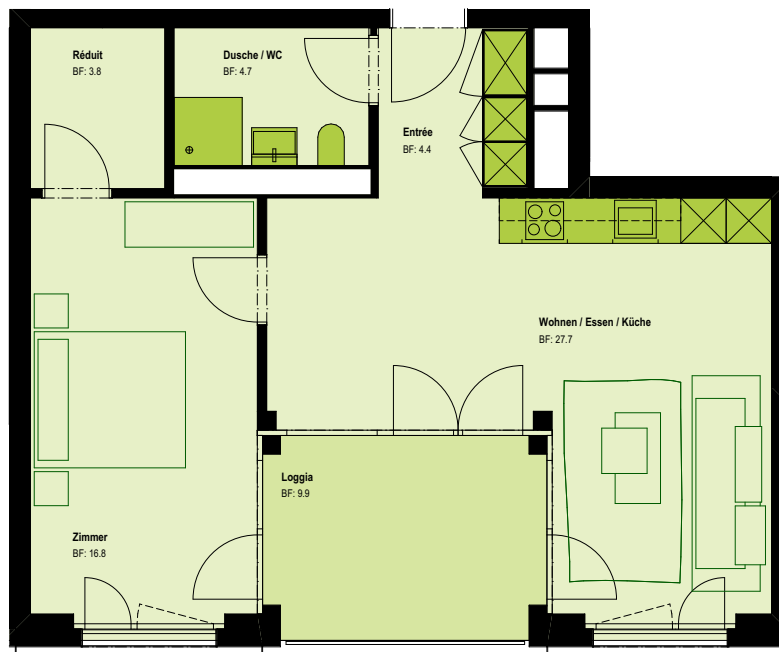
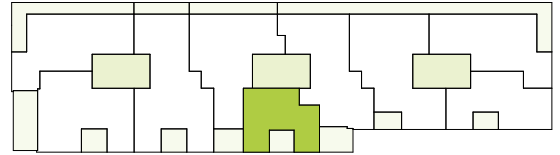


## 2.5 Zimmer-Wohnung

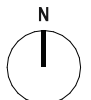
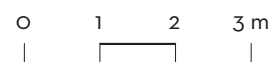
Seestrasse 295 B | 8804 Au ZH



Wohnungsnr.	SEE295B_10503	Loggia / Balkon	9.9 m <sup>2</sup>
Geschoss	5.OG	Raumhöhe	2.50 m
Wohnfläche	57.4 m <sup>2</sup>	Keller	5.1 m <sup>2</sup>



1:100



A4

# 4.5 Zimmer-Wohnung

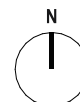
Seestrasse 295 B | 8804 Au ZH



Wohnungsnr.	SEE295B_10601	Loggia / Balkon	28.0 m <sup>2</sup>
Geschoss	6.OG	Raumhöhe	2.50 m
Wohnfläche	102.7 m <sup>2</sup>	Keller	5.0 m <sup>2</sup>



1:100



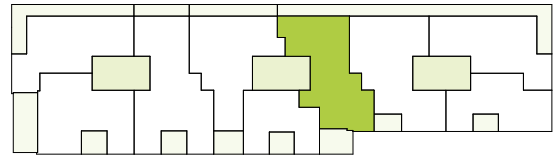
A4

# 4.5 Zimmer-Wohnung

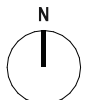
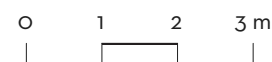
Seestrasse 295 B | 8804 Au ZH



Wohnungsnr.	SEE295B_10602	Loggia / Balkon	24.9 m <sup>2</sup>
Geschoss	6.OG	Raumhöhe	2.50 m
Wohnfläche	101.3 m <sup>2</sup>	Keller	5.0 m <sup>2</sup>



1:100



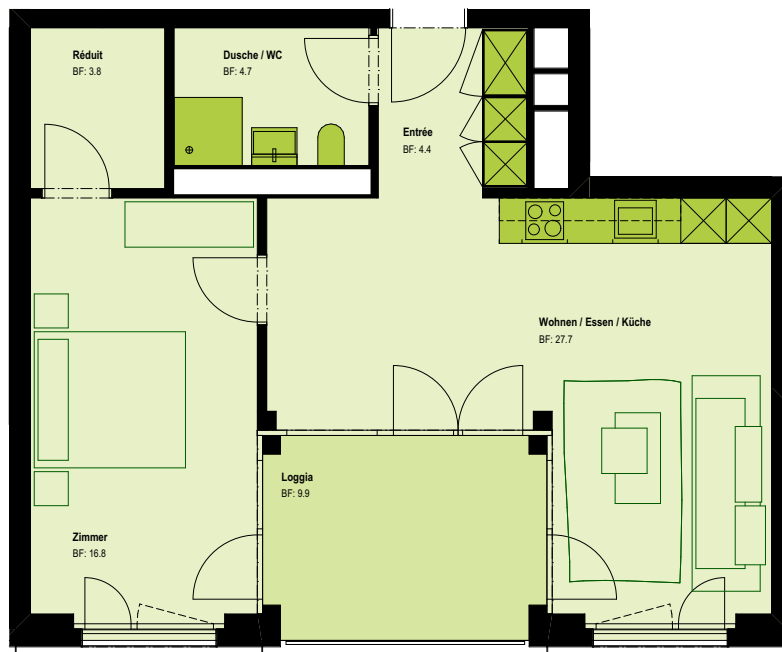
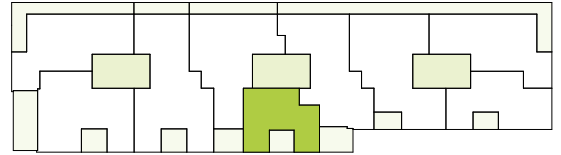
A4

## 2.5 Zimmer-Wohnung

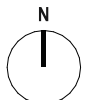
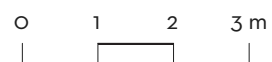
Seestrasse 295 B | 8804 Au ZH



Wohnungsnr.	SEE295B_10603	Loggia / Balkon	9.9 m <sup>2</sup>
Geschoss	6.OG	Raumhöhe	2.50 m
Wohnfläche	57.4 m <sup>2</sup>	Keller	5.0 m <sup>2</sup>



1:100



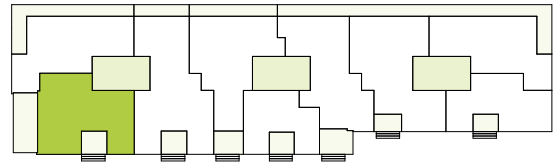
A4

# 3.5 Zimmer-Wohnung

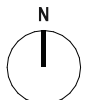
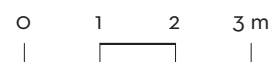
Seestrasse 295 C | 8804 Au ZH



Wohnungsnr.	SEE295C_10101	Loggia / Balkon	10.7 m <sup>2</sup>
Geschoss	1.OG	Raumhöhe	2.50 m
Wohnfläche	94.0 m <sup>2</sup>	Keller	8.1 m <sup>2</sup>



1:100



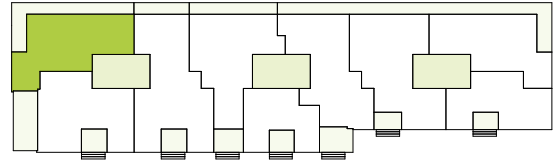
A4

# 3.5 Zimmer-Wohnung

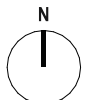
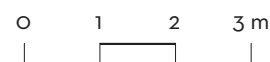
Seestrasse 295 C | 8804 Au ZH



Wohnungsnr.	SEE295C_10102	Loggia / Balkon	32.6 m <sup>2</sup>
Geschoss	1.OG	Raumhöhe	2.50 m
Wohnfläche	89.4 m <sup>2</sup>	Keller	8.0 m <sup>2</sup>



1:100



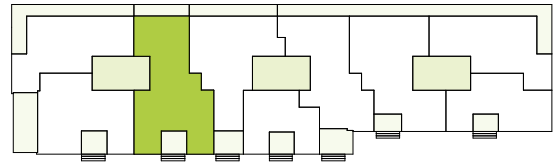
A4

# 5.5 Zimmer-Wohnung

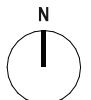
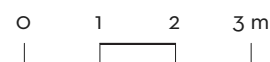
Seestrasse 295 C | 8804 Au ZH



Wohnungsnr.	SEE295C_10103	Loggia / Balkon	21.9 m <sup>2</sup>
Geschoss	1.OG	Raumhöhe	2.50 m
Wohnfläche	122.9 m <sup>2</sup>	Keller	5.0 m <sup>2</sup>



1:100



A4

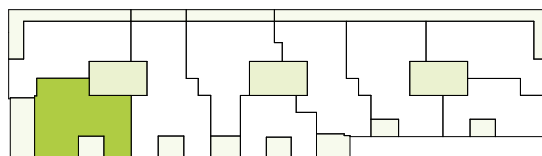


# 3.5 Zimmer-Wohnung

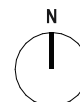
Seestrasse 295 C | 8804 Au ZH



Wohnungsnr.	SEE295C_10201	Loggia / Balkon	10.7 m <sup>2</sup>
Geschoss	2.OG	Raumhöhe	2.50 m
Wohnfläche	94.0 m <sup>2</sup>	Keller	8.1 m <sup>2</sup>



1:100



A4

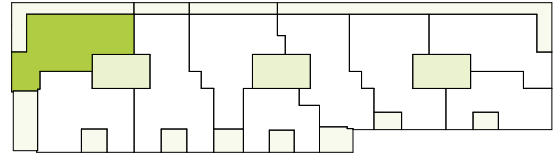


# 3.5 Zimmer-Wohnung

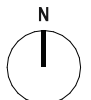
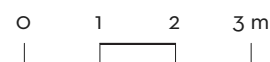
Seestrasse 295 C | 8804 Au ZH



Wohnungsnr.	SEE295C_10202	Loggia / Balkon	32.6 m <sup>2</sup>
Geschoss	2.OG	Raumhöhe	2.50 m
Wohnfläche	89.4 m <sup>2</sup>	Keller	7.8 m <sup>2</sup>



1:100



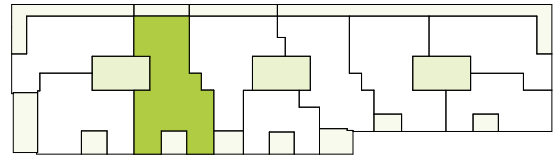
A4

# 5.5 Zimmer-Wohnung

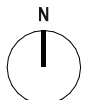
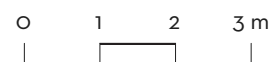
Seestrasse 295 C | 8804 Au ZH



Wohnungsnr.	SEE295C_10203	Loggia / Balkon	21.9 m <sup>2</sup>
Geschoss	2.OG	Raumhöhe	2.50 m
Wohnfläche	122.9 m <sup>2</sup>	Keller	5.0 m <sup>2</sup>



1:100



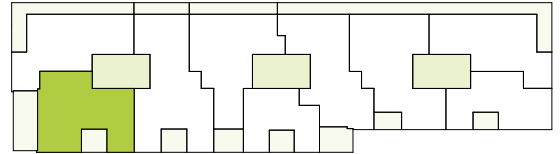
A4

# 3.5 Zimmer-Wohnung

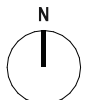
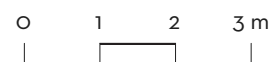
Seestrasse 295 C | 8804 Au ZH



Wohnungsnr.	SEE295C_10301	Loggia / Balkon	10.7 m <sup>2</sup>
Geschoss	3.OG	Raumhöhe	2.50 m
Wohnfläche	94.0 m <sup>2</sup>	Keller	8.6 m <sup>2</sup>



1:100



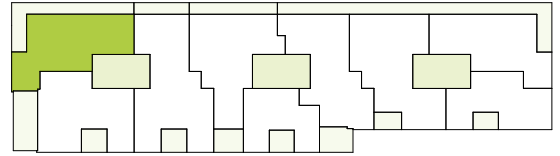
A4

# 3.5 Zimmer-Wohnung

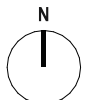
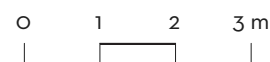
Seestrasse 295 C | 8804 Au ZH



Wohnungsnr.	SEE295C_10302	Loggia / Balkon	32.6 m <sup>2</sup>
Geschoss	3.OG	Raumhöhe	2.50 m
Wohnfläche	89.4 m <sup>2</sup>	Keller	7.8 m <sup>2</sup>



1:100



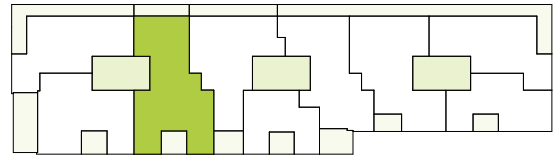
A4

# 5.5 Zimmer-Wohnung

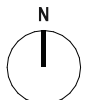
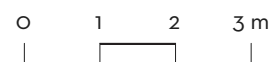
Seestrasse 295 C | 8804 Au ZH



Wohnungsnr.	SEE295C_10303	Loggia / Balkon	21.9 m <sup>2</sup>
Geschoss	3.OG	Raumhöhe	2.50 m
Wohnfläche	122.9 m <sup>2</sup>	Keller	5.1 m <sup>2</sup>



1:100



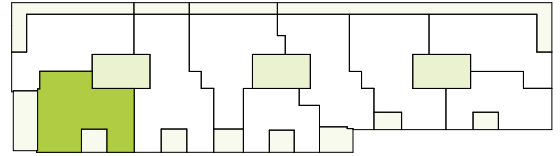
A4

# 3.5 Zimmer-Wohnung

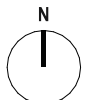
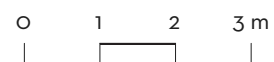
Seestrasse 295 C | 8804 Au ZH



Wohnungsnr.	SEE295C_10401	Loggia / Balkon	10.7 m <sup>2</sup>
Geschoss	4.OG	Raumhöhe	2.50 m
Wohnfläche	94.0 m <sup>2</sup>	Keller	8.3 m <sup>2</sup>



1:100



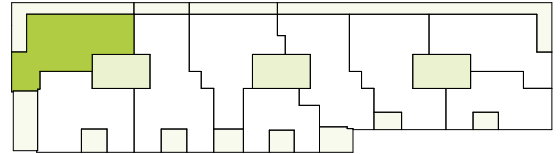
A4

# 3.5 Zimmer-Wohnung

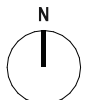
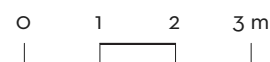
Seestrasse 295 C | 8804 Au ZH



Wohnungsnr.	SEE295C_10402	Loggia / Balkon	32.6 m <sup>2</sup>
Geschoss	4.OG	Raumhöhe	2.50 m
Wohnfläche	89.4 m <sup>2</sup>	Keller	7.6 m <sup>2</sup>



1:100



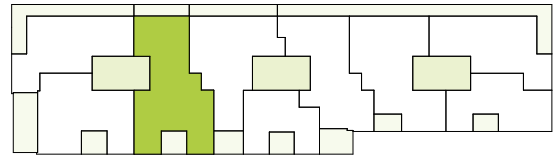
A4

# 5.5 Zimmer-Wohnung

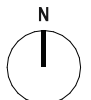
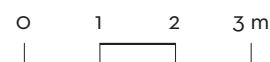
Seestrasse 295 C | 8804 Au ZH



Wohnungsnr.	SEE295C_10403	Loggia / Balkon	21.9 m <sup>2</sup>
Geschoss	4.OG	Raumhöhe	2.50 m
Wohnfläche	122.9 m <sup>2</sup>	Keller	5.2 m <sup>2</sup>



1:100



A4

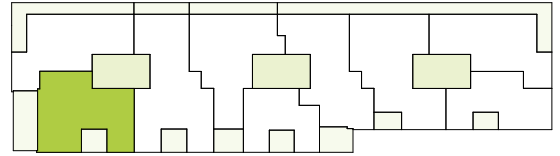


# 3.5 Zimmer-Wohnung

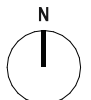
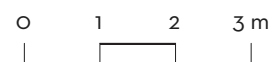
Seestrasse 295 C | 8804 Au ZH



Wohnungsnr.	SEE295C_10501	Loggia / Balkon	10.7 m <sup>2</sup>
Geschoss	5.OG	Raumhöhe	2.50 m
Wohnfläche	94.0 m <sup>2</sup>	Keller	8.0 m <sup>2</sup>



1:100



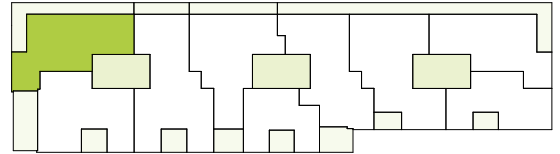
A4

# 3.5 Zimmer-Wohnung

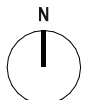
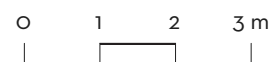
Seestrasse 295 C | 8804 Au ZH



Wohnungsnr.	SEE295C_10502	Loggia / Balkon	32.6 m <sup>2</sup>
Geschoss	5.OG	Raumhöhe	2.50 m
Wohnfläche	89.4 m <sup>2</sup>	Keller	7.4 m <sup>2</sup>



1:100



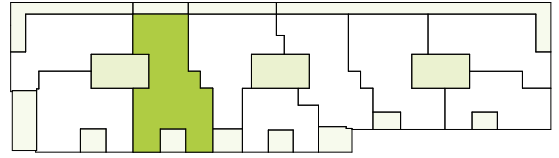
A4

# 5.5 Zimmer-Wohnung

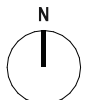
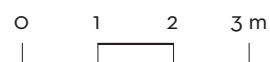
Seestrasse 295 C | 8804 Au ZH



Wohnungsnr.	SEE295C_10503	Loggia / Balkon	21.9 m <sup>2</sup>
Geschoss	5.OG	Raumhöhe	2.50 m
Wohnfläche	122.9 m <sup>2</sup>	Keller	5.2 m <sup>2</sup>



1:100



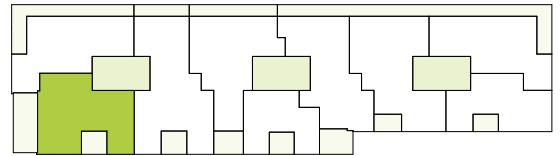
A4

# 3.5 Zimmer-Wohnung

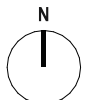
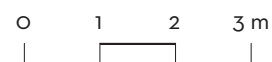
Seestrasse 295 C | 8804 Au ZH



Wohnungsnr.	SEE295C_10601	Loggia / Balkon	10.7 m <sup>2</sup>
Geschoss	6.OG	Raumhöhe	2.50 m
Wohnfläche	94.0 m <sup>2</sup>	Keller	8.0 m <sup>2</sup>



1:100



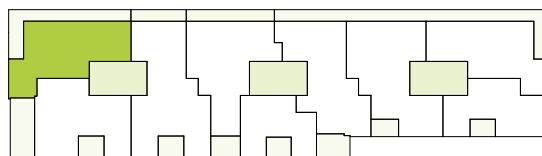
A4

# 3.5 Zimmer-Wohnung

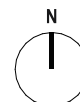
Seestrasse 295 C | 8804 Au ZH



Wohnungsnr.	SEE295C_10602	Loggia / Balkon	32.6 m <sup>2</sup>
Geschoss	6.OG	Raumhöhe	2.50 m
Wohnfläche	89.4 m <sup>2</sup>	Keller	8.2 m <sup>2</sup>



1:100



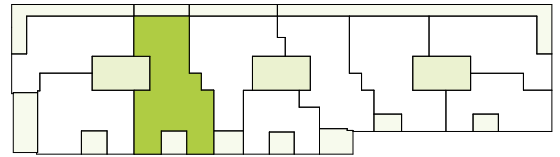
A4

# 5.5 Zimmer-Wohnung

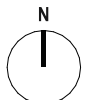
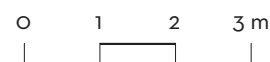
Seestrasse 295 C | 8804 Au ZH



Wohnungsnr.	SEE295C_10603	Loggia / Balkon	21.9 m <sup>2</sup>
Geschoss	6.OG	Raumhöhe	2.50 m
Wohnfläche	122.9 m <sup>2</sup>	Keller	5.3 m <sup>2</sup>



1:100



A4