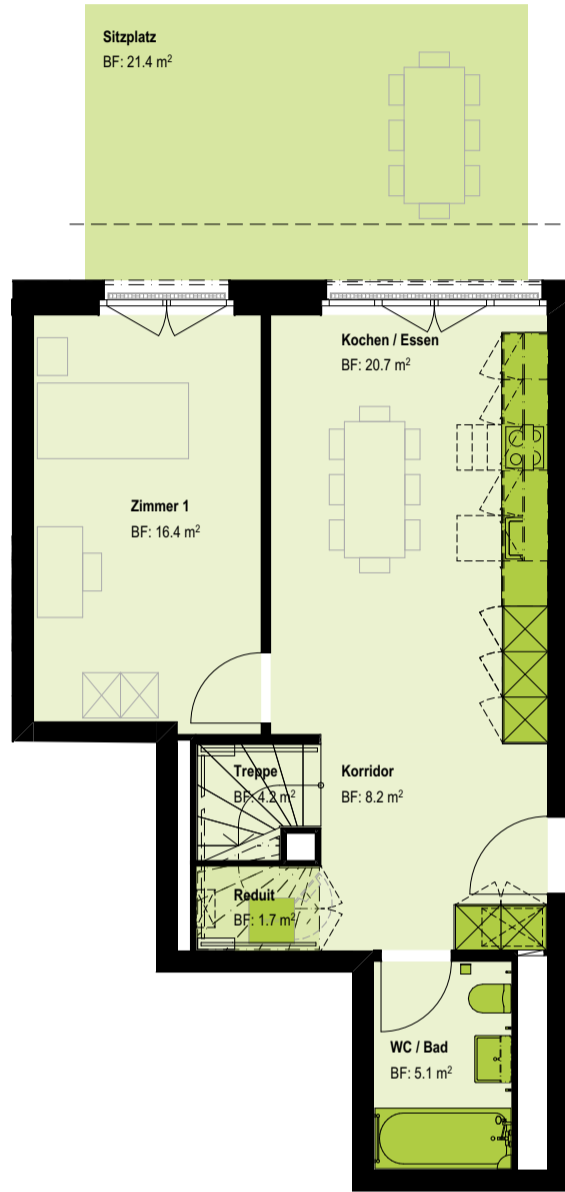
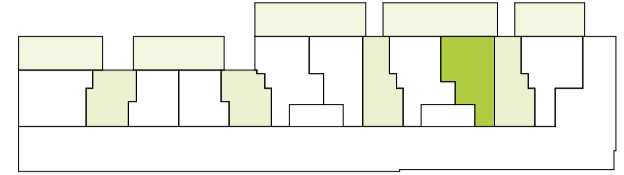


4.5 Zimmer-Maisonette

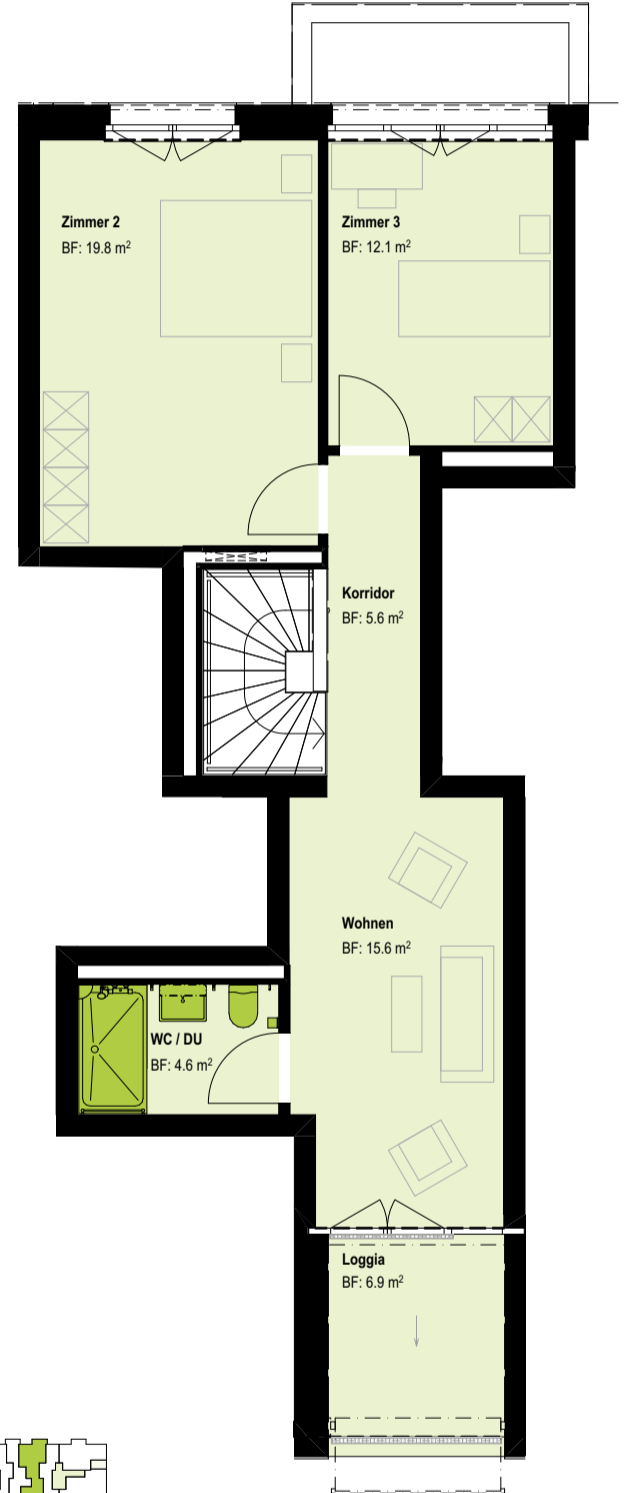
Seestrasse 293 A | 8804 Au ZH



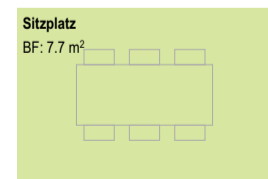
Wohnungsnr.	SEE293A_10001	Loggia / Balkon	6.9 m ²
Geschoss	EG	Sitzplatz	29.1 m ²
Wohnfläche	114 m ²	Raumhöhe	2.54 m
		Keller	8.1 m ²



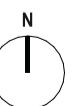
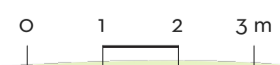
EG



1. OG



1:100



A3

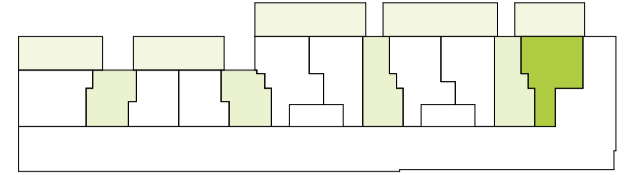


4.5 Zimmer-Maisonette

Seestrasse 293 A | 8804 Au ZH



Wohnungsnr.	SEE293A_10002	Loggia / Balkon	8.8 m ²
Geschoss	EG	Sitzplatz	27.9 m ²
Wohnfläche	109.8 m ²	Raumhöhe	2.54 m
		Keller	8.0 m ²



EG



1. OG

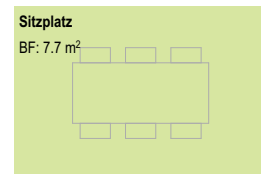
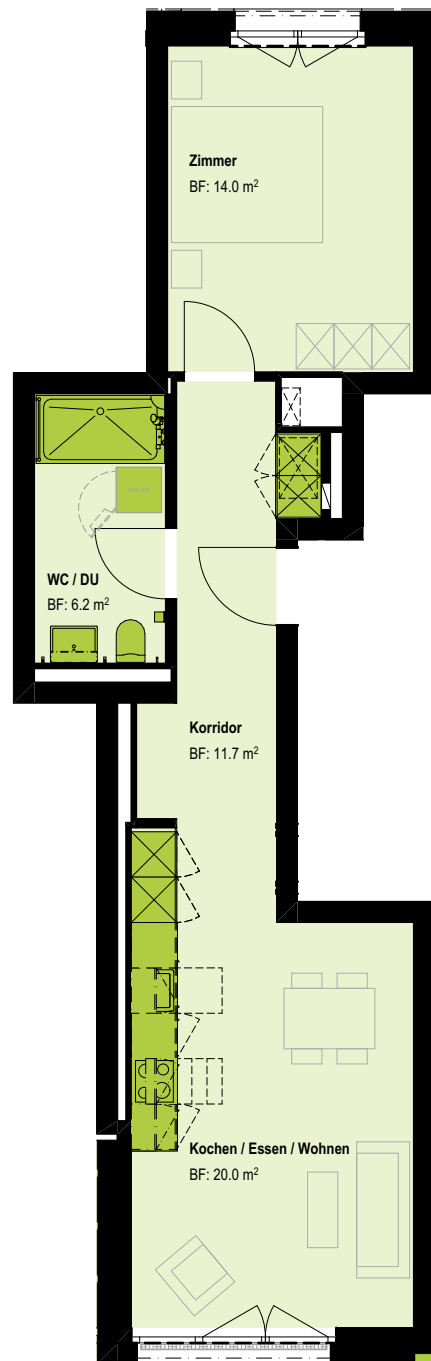
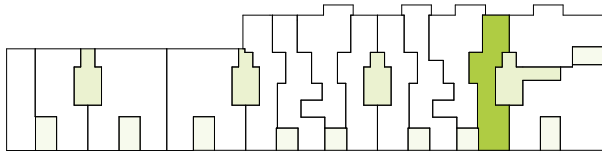


2.5 Zimmer-Wohnung

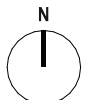
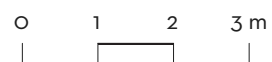
Seestrasse 293 A | 8804 Au ZH



Wohnungsnr.	SEE293A_10101	Sitzplatz	7.7 m ²
Geschoss	1.OG	Raumhöhe	2.69 m
Wohnfläche	51.8 m ²	Keller	5.7 m ²



1:100



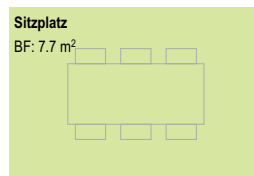
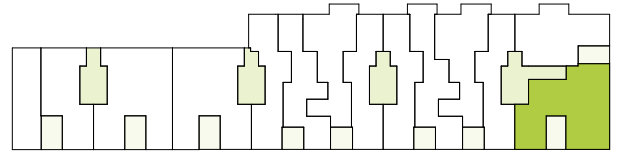
A4

3.5 Zimmer-Wohnung

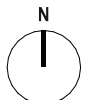
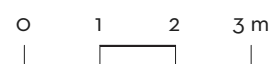
Seestrasse 293 A | 8804 Au ZH



Wohnungsnr.	SEE293A_10102	Loggia / Balkon	10.5 m ²
Geschoss	1.OG	Sitzplatz	7.7 m ²
Wohnfläche	90.2 m ²	Raumhöhe	2.69 m
		Keller	8.1 m ²



1:100



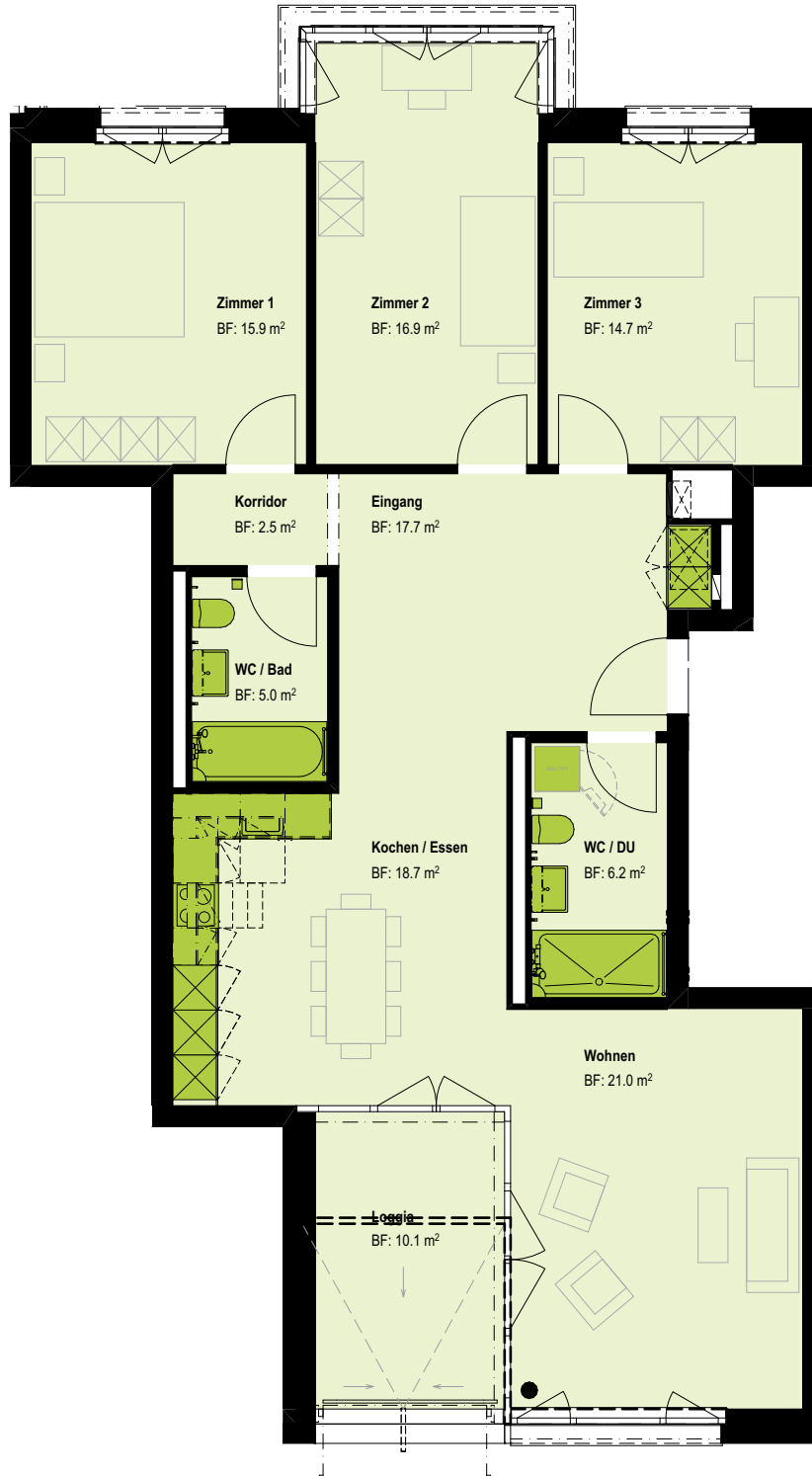
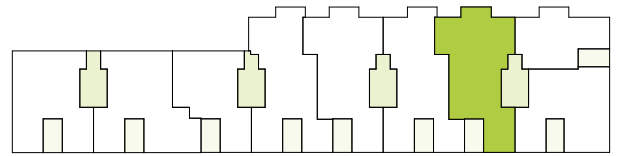
A4

4.5 Zimmer-Wohnung

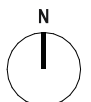
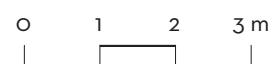
Seestrasse 293 A | 8804 Au ZH



Wohnungsnr.	SEE293A_10201	Loggia / Balkon	10.1 m ²
Geschoss	2.OG	Raumhöhe	2.54 m
Wohnfläche	118.7 m ²	Keller	8.5 m ²



1:100



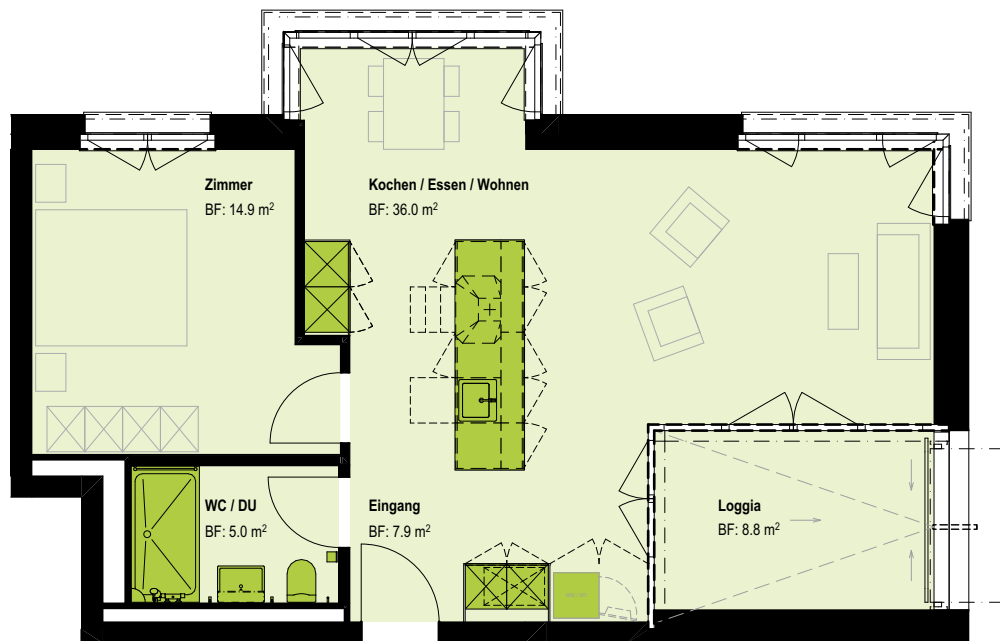
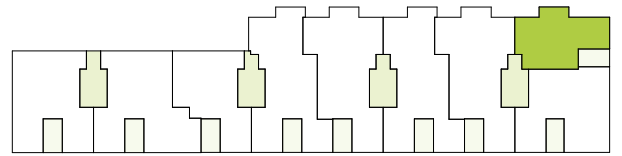
A4

2.5 Zimmer-Wohnung

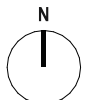
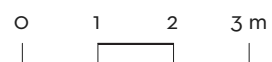
Seestrasse 293 A | 8804 Au ZH



Wohnungsnr.	SEE293A_10202	Loggia / Balkon	8.8 m ²
Geschoss	2.OG	Raumhöhe	2.54 m
Wohnfläche	63.8 m ²	Keller	5.9 m ²



1:100



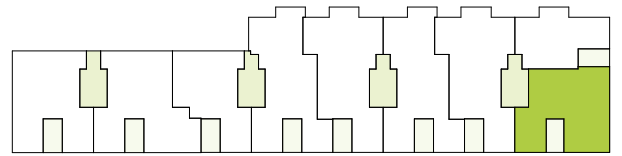
A4

3.5 Zimmer-Wohnung

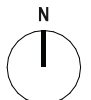
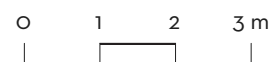
Seestrasse 293 A | 8804 Au ZH



Wohnungsnr.	SEE293A_10203	Loggia / Balkon	9.4 m ²
Geschoss	2.OG	Raumhöhe	2.54 m
Wohnfläche	90.2 m ²	Keller	8.1 m ²



1:100



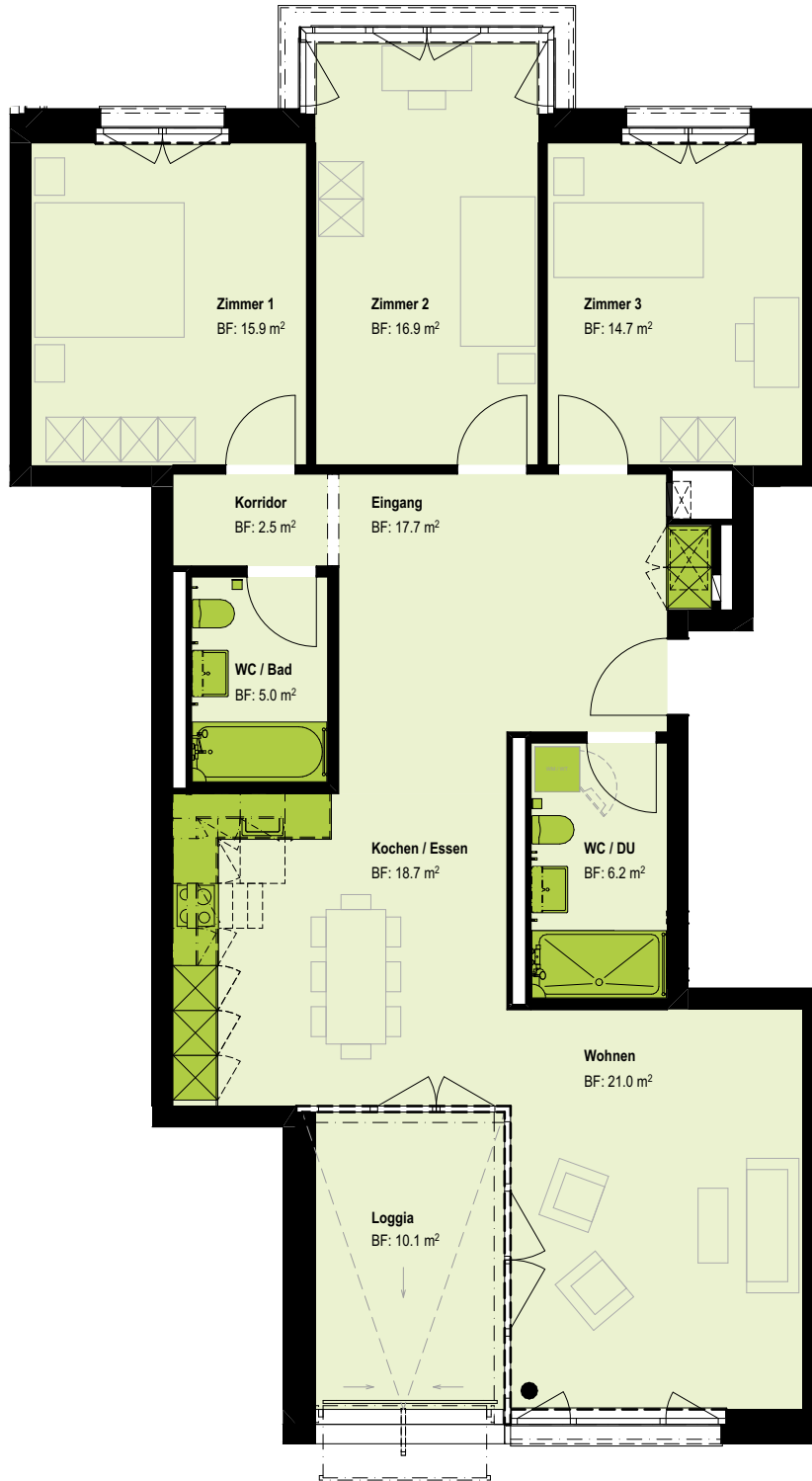
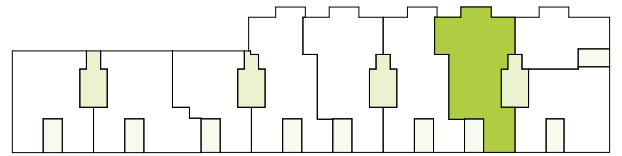
A4

4.5 Zimmer-Wohnung

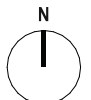
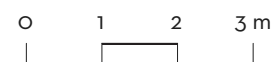
Seestrasse 293 A | 8804 Au ZH



Wohnungsnr.	SEE293A_10301	Loggia / Balkon	10.1 m ²
Geschoss	3.OG	Raumhöhe	2.54 m
Wohnfläche	118.7 m ²	Keller	8.6 m ²



1:100



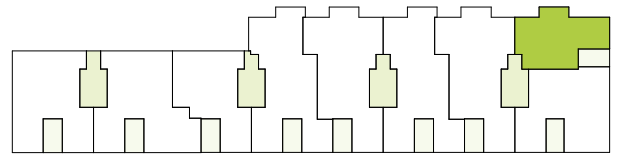
A4

2.5 Zimmer-Wohnung

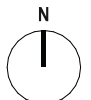
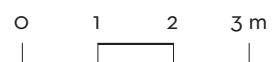
Seestrasse 293 A | 8804 Au ZH



Wohnungsnr.	SEE293A_10302	Loggia / Balkon	8.8 m ²
Geschoss	3.OG	Raumhöhe	2.54 m
Wohnfläche	63.8 m ²	Keller	5.9 m ²



1:100



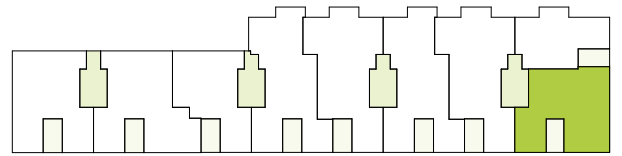
A4

3.5 Zimmer-Wohnung

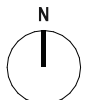
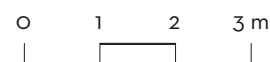
Seestrasse 293 A | 8804 Au ZH



Wohnungsnr.	SEE293A_10303	Loggia / Balkon	9.4 m ²
Geschoss	3.OG	Raumhöhe	2.54 m
Wohnfläche	90.2 m ²	Keller	8.1 m ²



1:100



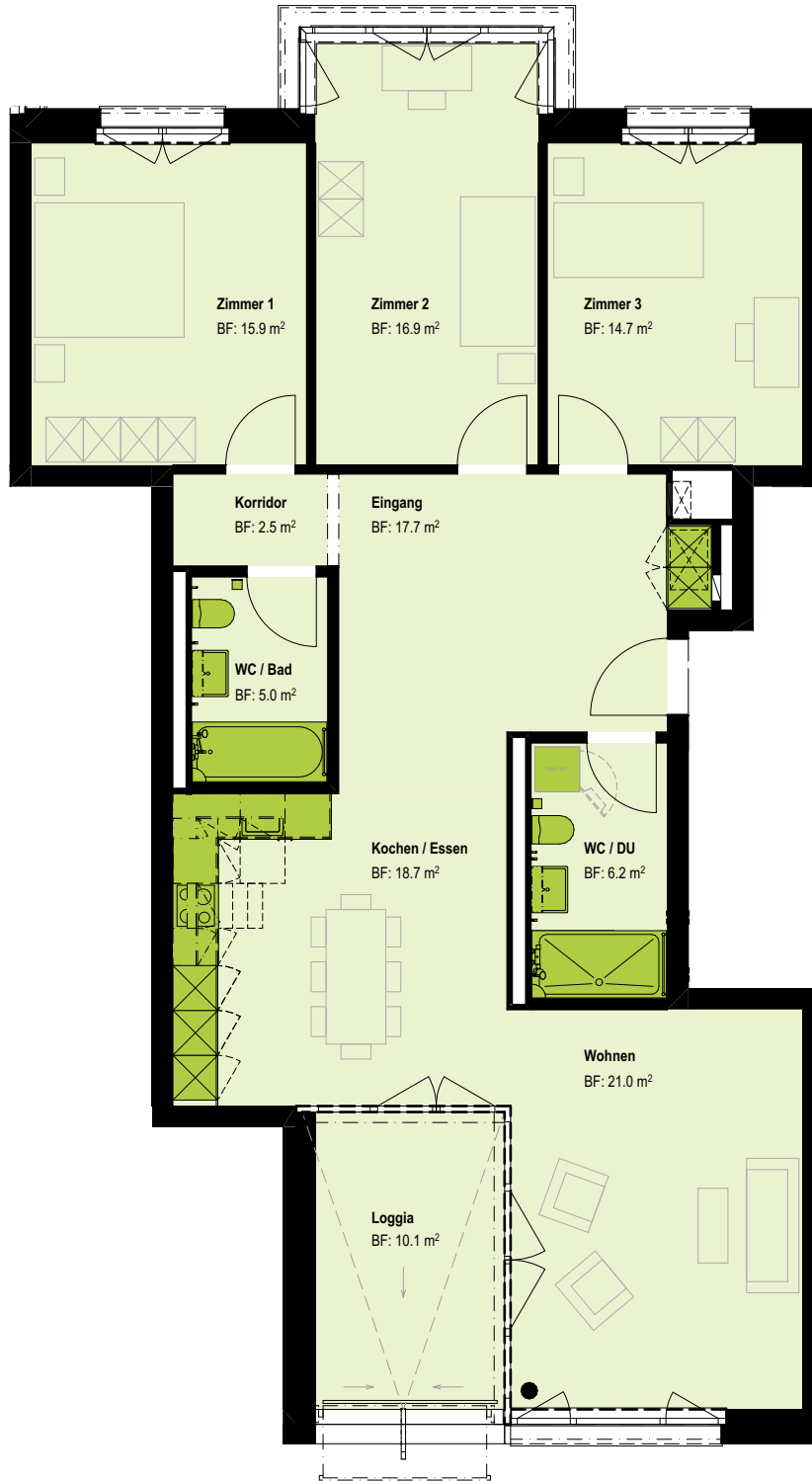
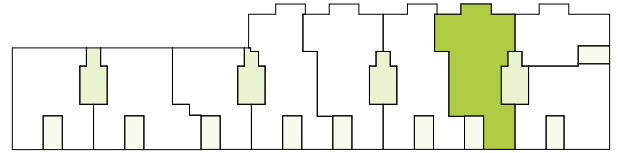
A4

4.5 Zimmer-Wohnung

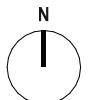
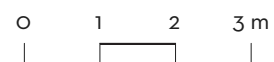
Seestrasse 293 A | 8804 Au ZH



Wohnungsnr.	SEE293A_10401	Loggia / Balkon	10.1 m ²
Geschoss	4.OG	Raumhöhe	2.54 m
Wohnfläche	118.7 m ²	Keller	8.3 m ²



1:100



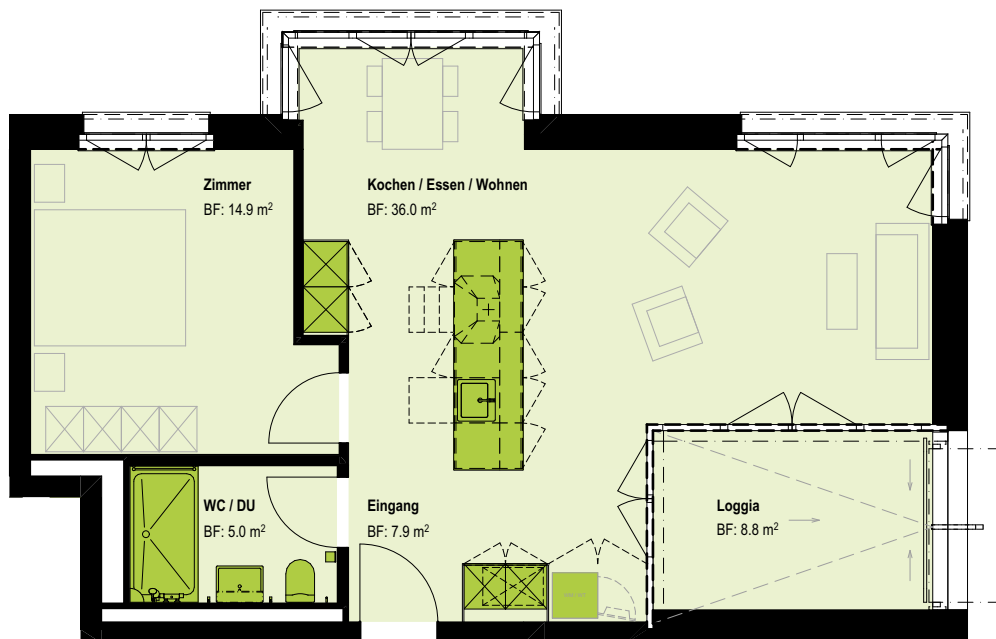
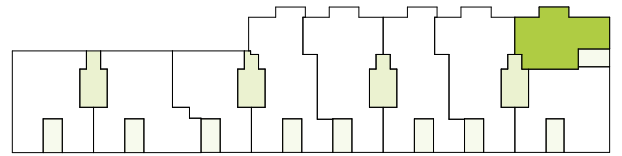
A4

2.5 Zimmer-Wohnung

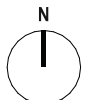
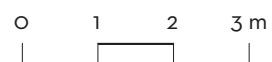
Seestrasse 293 A | 8804 Au ZH



Wohnungsnr.	SEE293A_10402	Loggia / Balkon	8.8 m ²
Geschoss	4.OG	Raumhöhe	2.54 m
Wohnfläche	63.8 m ²	Keller	5.2 m ²



1:100



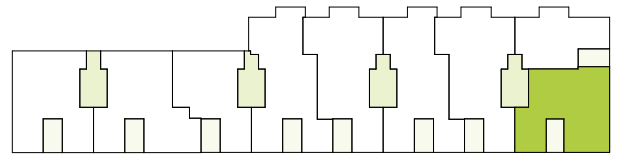
A4

3.5 Zimmer-Wohnung

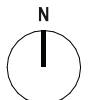
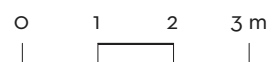
Seestrasse 293 A | 8804 Au ZH



Wohnungsnr.	SEE293A_10403	Loggia / Balkon	9.4 m ²
Geschoss	4.OG	Raumhöhe	2.54 m
Wohnfläche	90.2 m ²	Keller	8.0 m ²



1:100



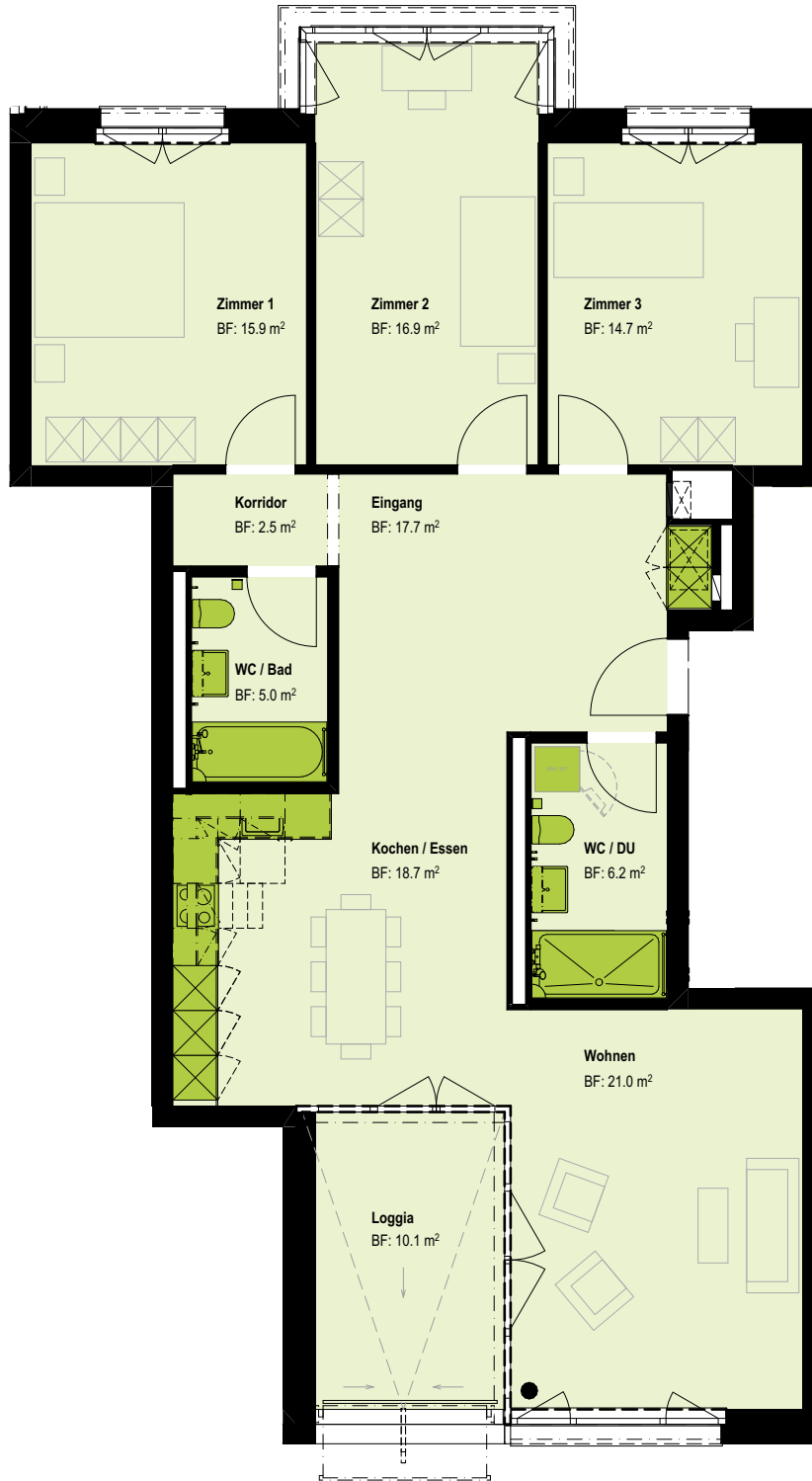
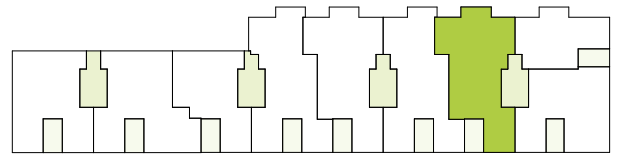
A4

4.5 Zimmer-Wohnung

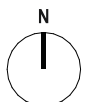
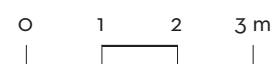
Seestrasse 293 A | 8804 Au ZH



Wohnungsnr.	SEE293A_10501	Loggia / Balkon	10.1 m ²
Geschoss	5.OG	Raumhöhe	2.54 m
Wohnfläche	118.7 m ²	Keller	8.08 m ²



1:100



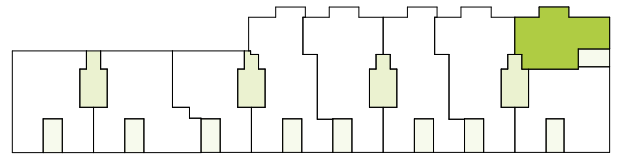
A4

2.5 Zimmer-Wohnung

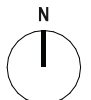
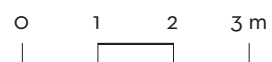
Seestrasse 293 A | 8804 Au ZH



Wohnungsnr.	SEE293A_10502	Loggia / Balkon	8.8 m ²
Geschoss	5.OG	Raumhöhe	2.54 m
Wohnfläche	63.8 m ²	Keller	5.2 m ²



1:100



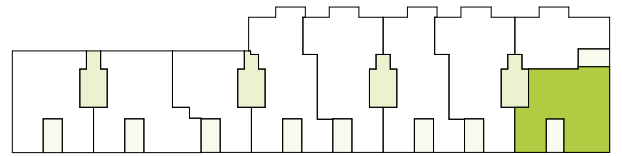
A4

3.5 Zimmer-Wohnung

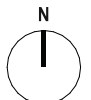
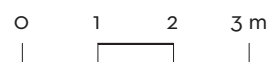
Seestrasse 293 A | 8804 Au ZH



Wohnungsnr.	SEE293A_10503	Loggia / Balkon	9.4 m ²
Geschoss	5.OG	Raumhöhe	2.54 m
Wohnfläche	90.2 m ²	Keller	8.0 m ²



1:100



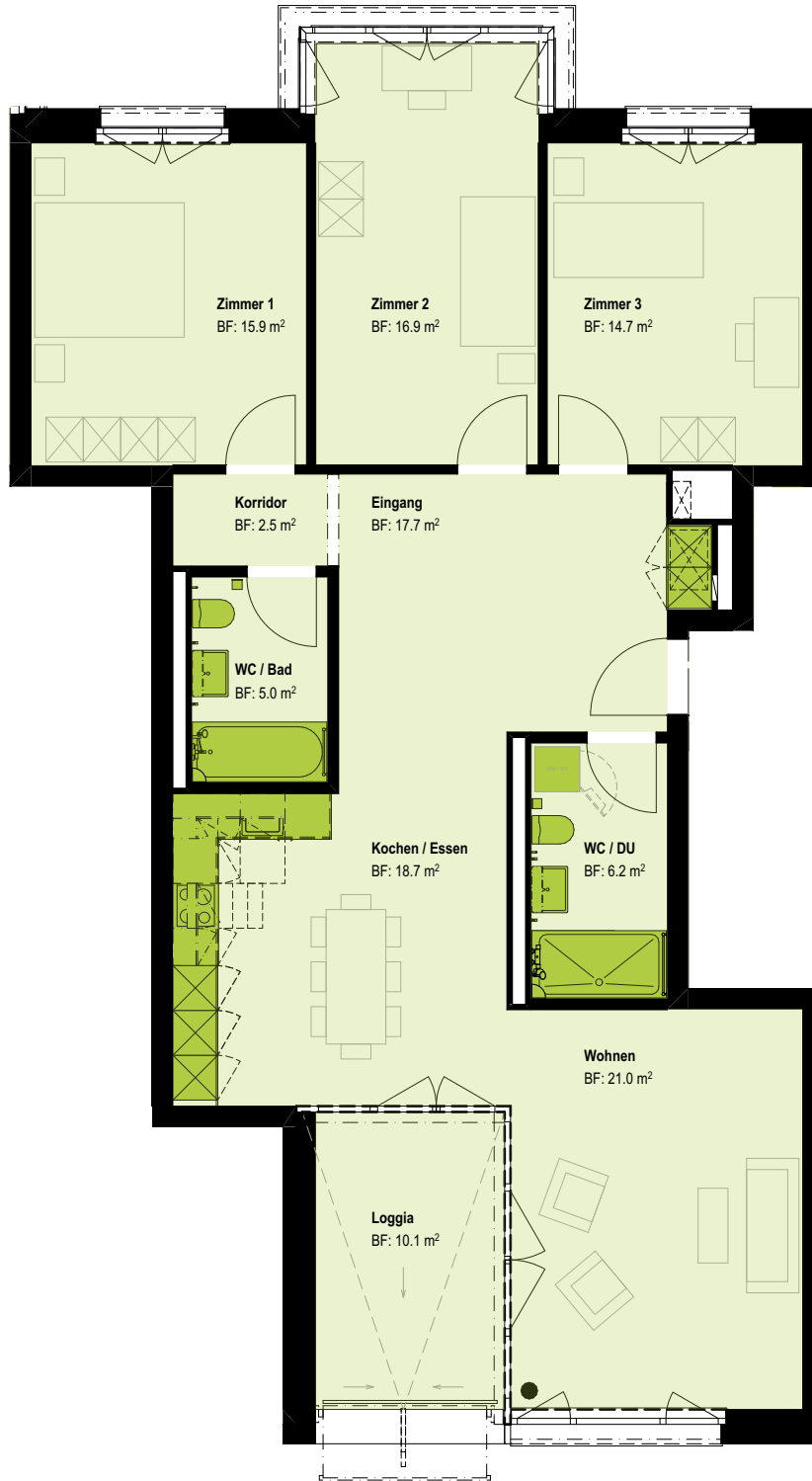
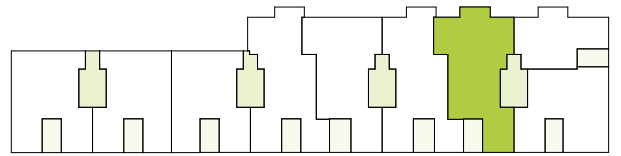
A4

4.5 Zimmer-Wohnung

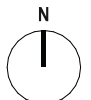
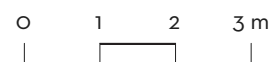
Seestrasse 293 A | 8804 Au ZH



Wohnungsnr.	SEE293A_10601	Loggia / Balkon	10.1 m ²
Geschoss	6.OG	Raumhöhe	2.79 m
Wohnfläche	118.7 m ²	Keller	8.0 m ²



1:100



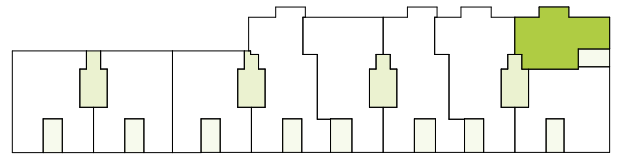
A4

2.5 Zimmer-Wohnung

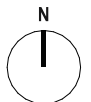
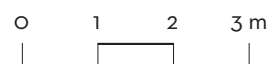
Seestrasse 293 A | 8804 Au ZH



Wohnungsnr.	SEE293A_10602	Loggia / Balkon	8.8 m ²
Geschoss	6.OG	Raumhöhe	2.79 m
Wohnfläche	63.8 m ²	Keller	5.0 m ²



1:100



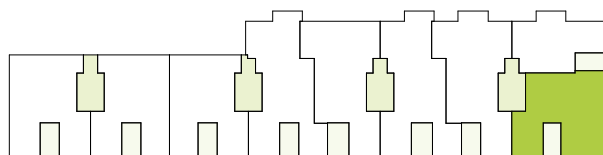
A4

3.5 Zimmer-Wohnung

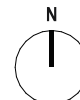
Seestrasse 293 A | 8804 Au ZH



Wohnungsnr.	SEE293A_10603	Loggia / Balkon	9.4 m ²
Geschoss	6.OG	Raumhöhe	2.79 m
Wohnfläche	90.2 m ²	Keller	8.1 m ²



1:100



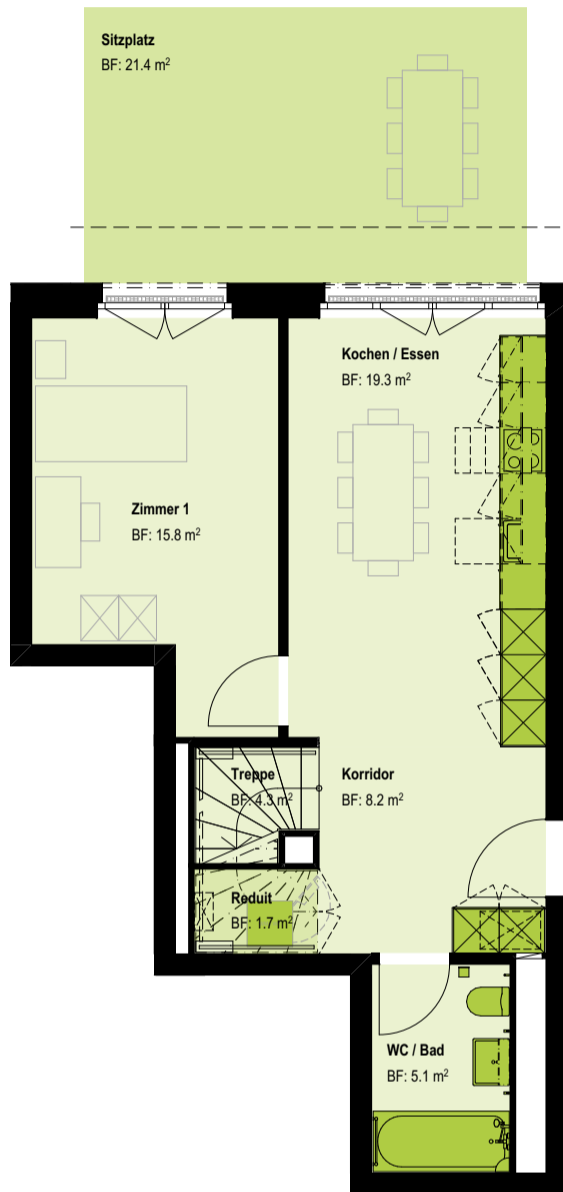
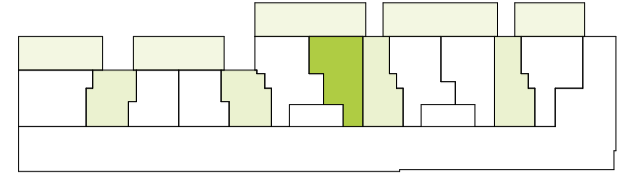
A4

4.5 Zimmer-Maisonette

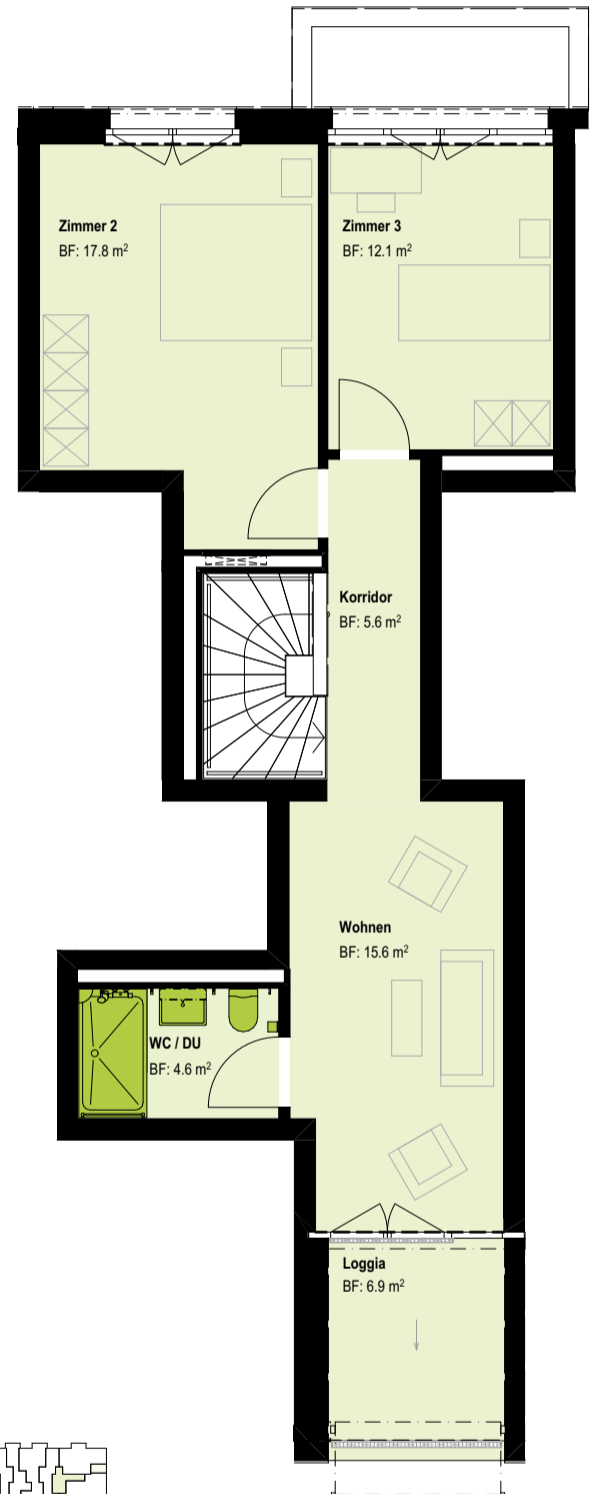
Seestrasse 293 B | 8804 Au ZH



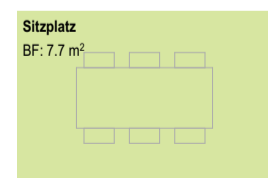
Wohnungsnr.	SEE293B_10001	Loggia / Balkon	6.9 m ²
Geschoss	EG	Sitzplatz	29.1 m ²
Wohnfläche	110 m ²	Raumhöhe	2.54 m
		Keller	8.9 m ²



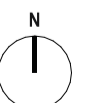
EG



1. OG



1:100



A3

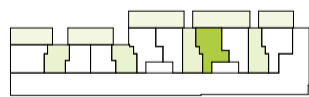
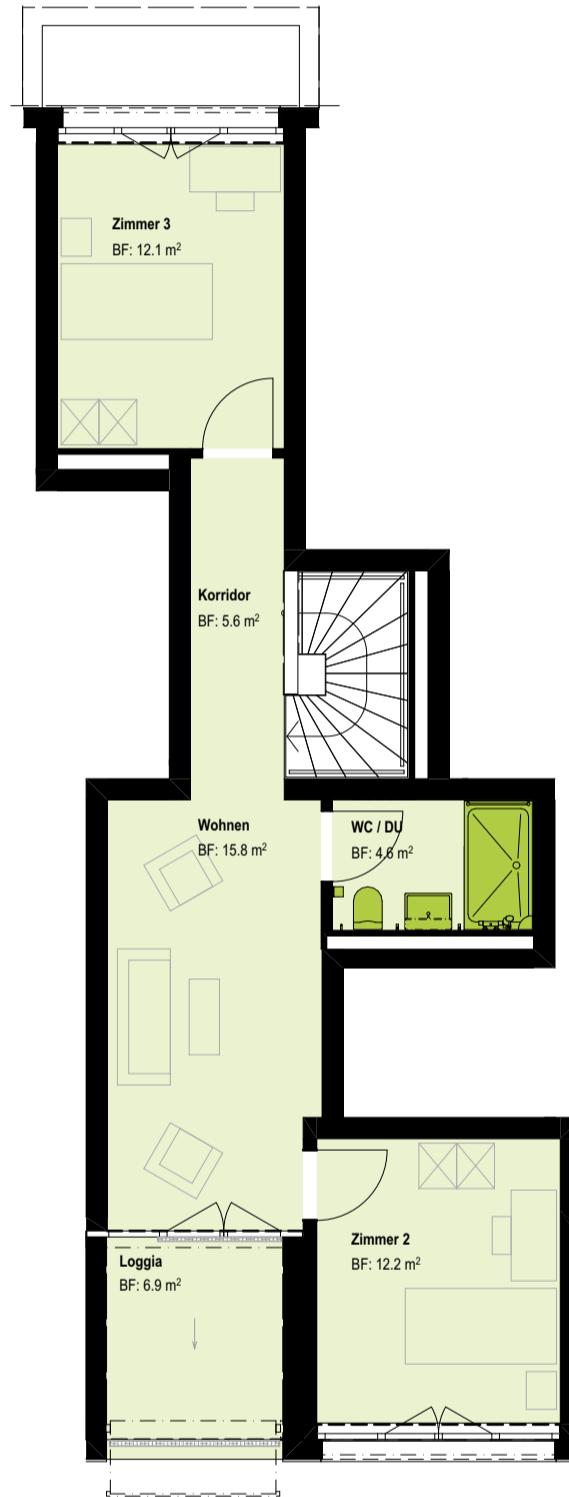
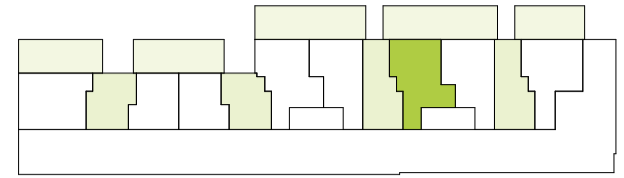


4.5 Zimmer-Maisonette

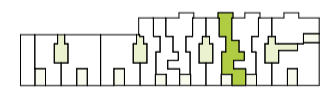
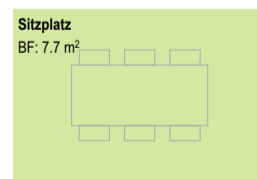
Seestrasse 293 B | 8804 Au ZH



Wohnungsnr.	SEE293B_10002	Loggia / Balkon	6.9 m ²
Geschoss	EG	Sitzplatz	32.8 m ²
Wohnfläche	108.0 m ²	Raumhöhe	2.54 m
		Keller	8.9 m ²



EG



1. OG

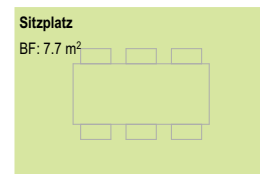
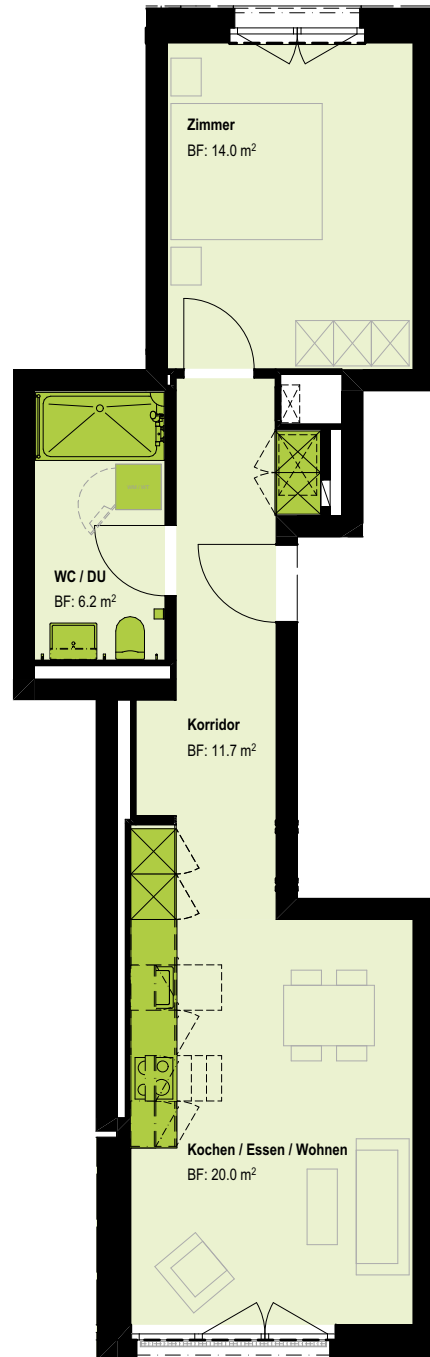
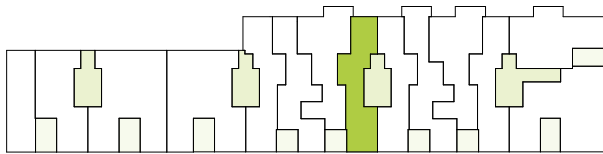


2.5 Zimmer-Wohnung

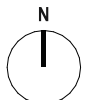
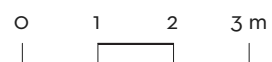
Seestrasse 293 B | 8804 Au ZH



Wohnungsnr.	SEE293B_10101	Sitzplatz	7.7 m ²
Geschoss	1.OG	Raumhöhe	2.69 m
Wohnfläche	51.8 m ²	Keller	5.2 m ²



1:100



A4

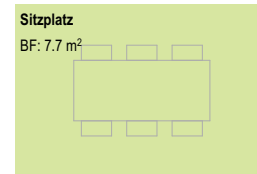
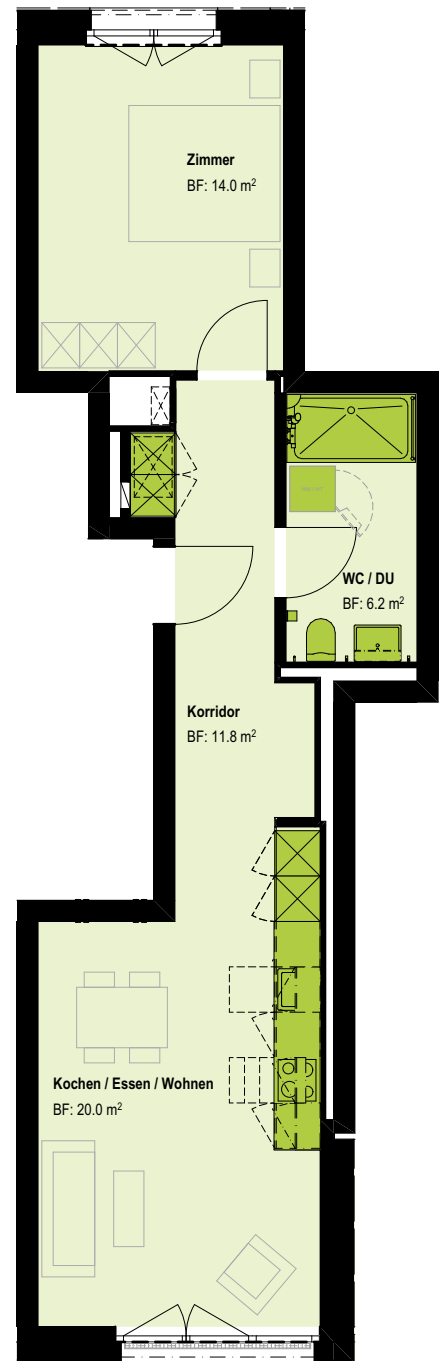
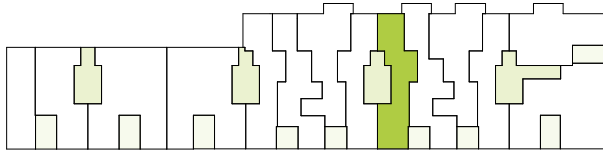


2.5 Zimmer-Wohnung

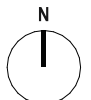
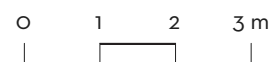
Seestrasse 293 B | 8804 Au ZH



Wohnungsnr.	SEE293B_10102	Sitzplatz	7.7 m ²
Geschoss	1.OG	Raumhöhe	2.69 m
Wohnfläche	52.0 m ²	Keller	5.1 m ²



1:100

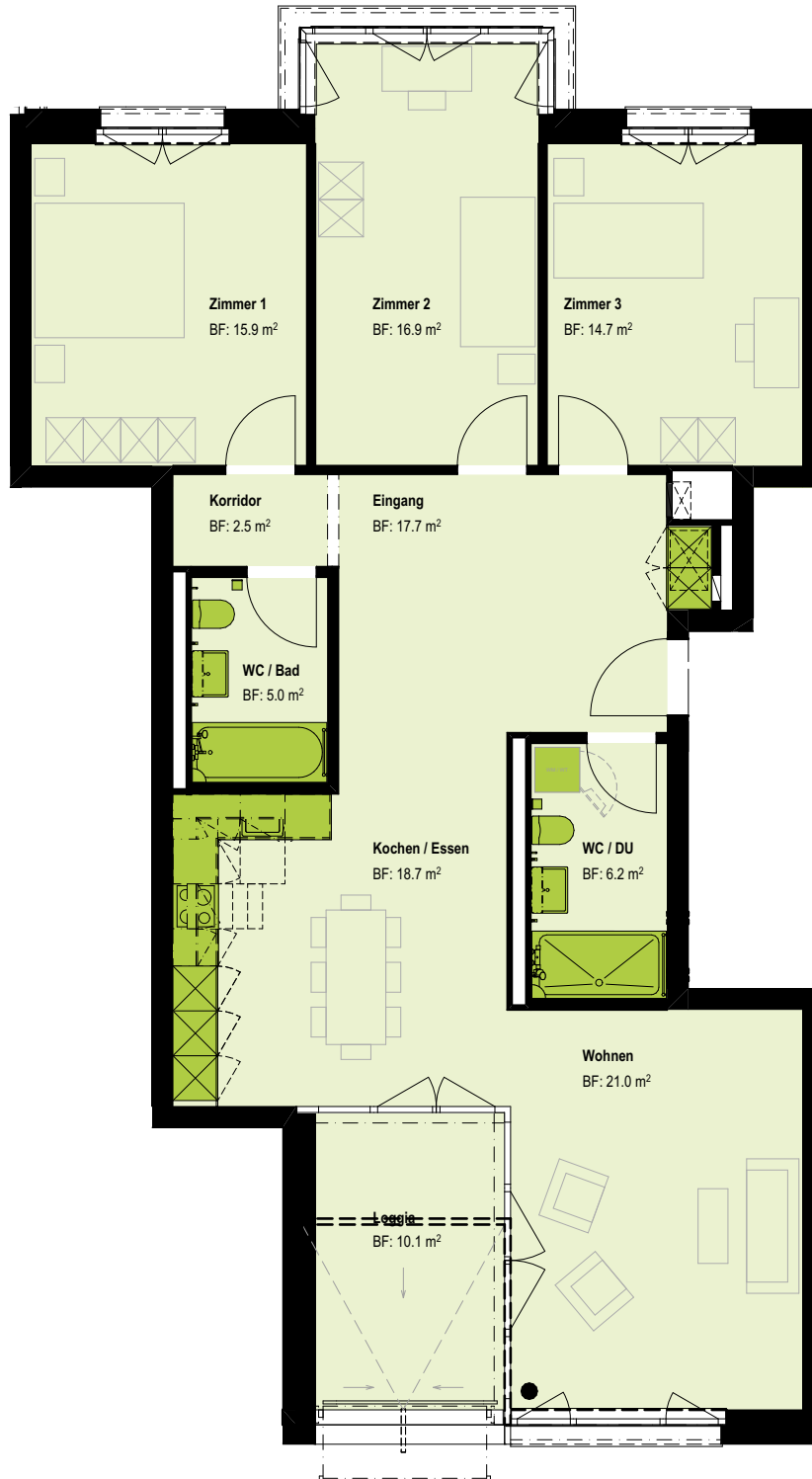
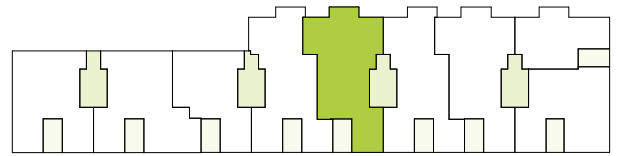


4.5 Zimmer-Wohnung

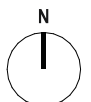
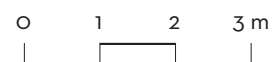
Seestrasse 293 B | 8804 Au ZH



Wohnungsnr.	SEE293B_10201	Loggia / Balkon	10.1 m ²
Geschoss	2.OG	Raumhöhe	2.54 m
Wohnfläche	118.7 m ²	Keller	9.3 m ²



1:100



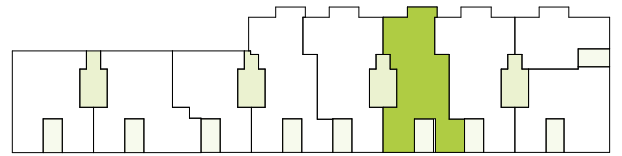
A4

4.5 Zimmer-Wohnung

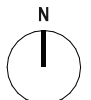
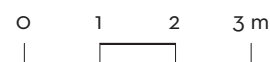
Seestrasse 293 B | 8804 Au ZH



Wohnungsnr.	SEE293B_10202	Loggia / Balkon	10.1 m ²
Geschoss	2.OG	Raumhöhe	2.54 m
Wohnfläche	114.8 m ²	Keller	8.0 m ²



1:100



A4

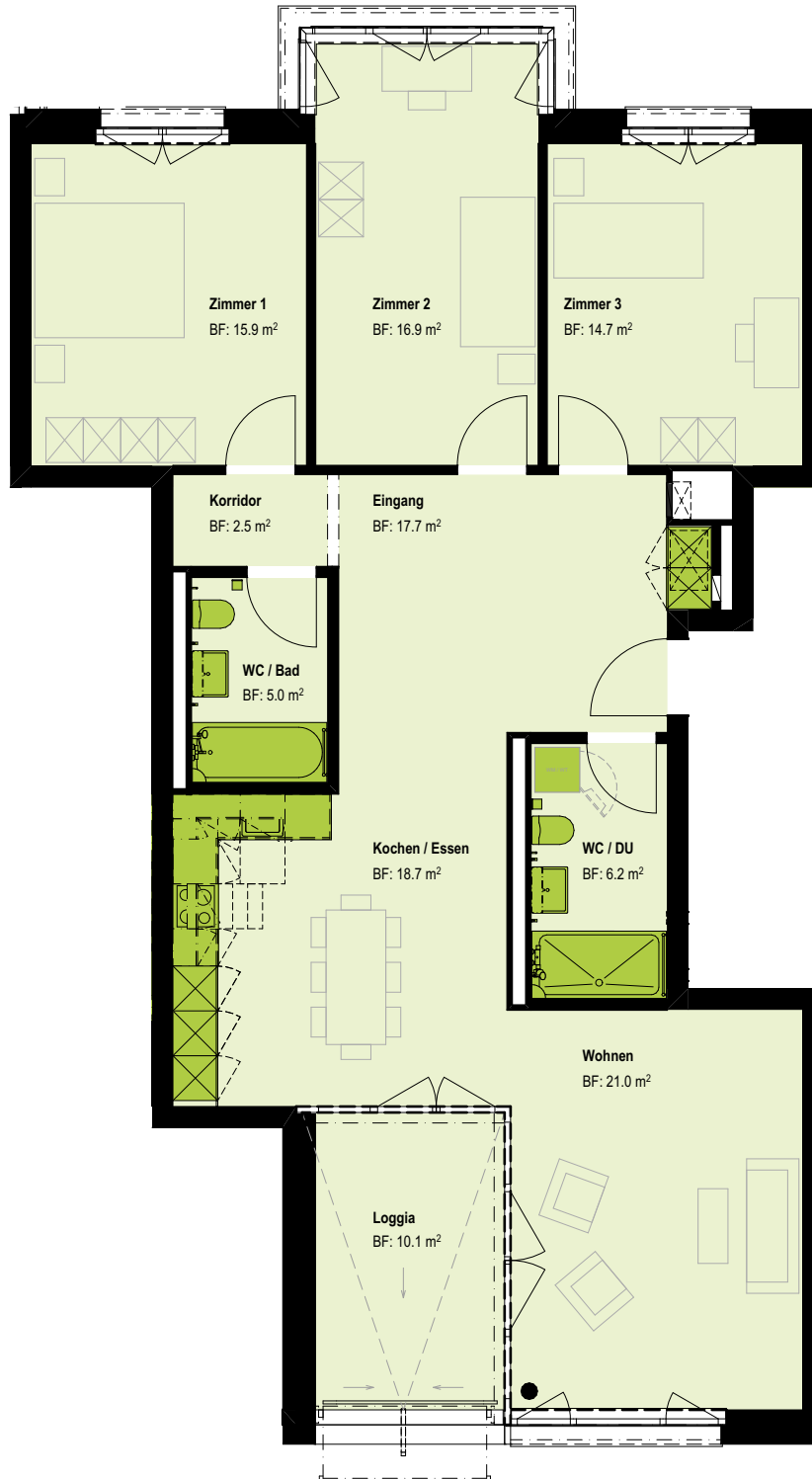
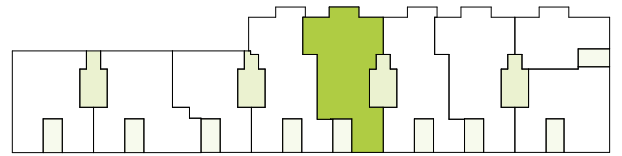


4.5 Zimmer-Wohnung

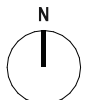
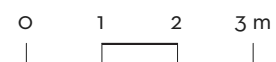
Seestrasse 293 B | 8804 Au ZH



Wohnungsnr.	SEE293B_10301	Loggia / Balkon	10.1 m ²
Geschoss	3.OG	Raumhöhe	2.54 m
Wohnfläche	118.7 m ²	Keller	9.6 m ²



1:100



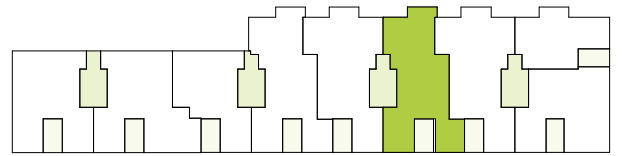
A4

4.5 Zimmer-Wohnung

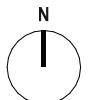
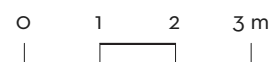
Seestrasse 293 B | 8804 Au ZH



Wohnungsnr.	SEE293B_10302	Loggia / Balkon	10.1 m ²
Geschoss	3.OG	Raumhöhe	2.54 m
Wohnfläche	114.8 m ²	Keller	9.6 m ²



1:100



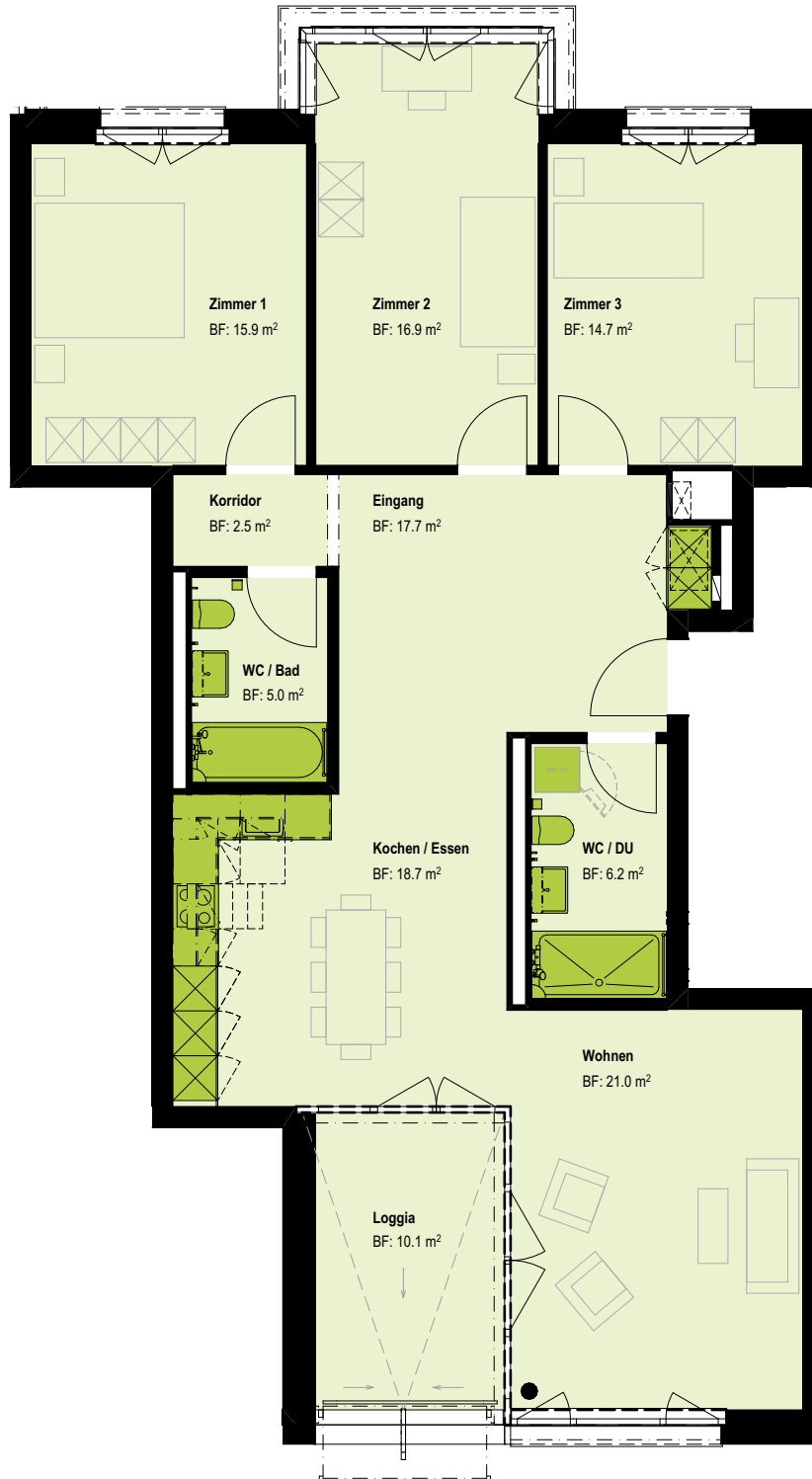
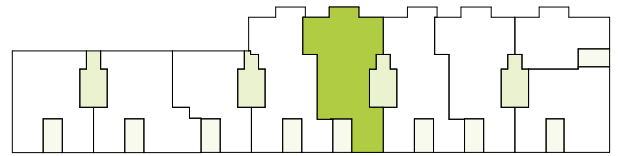
A4

4.5 Zimmer-Wohnung

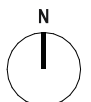
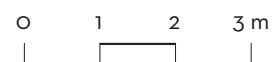
Seestrasse 293 B | 8804 Au ZH



Wohnungsnr.	SEE293B_10401	Loggia / Balkon	10.1 m ²
Geschoss	4.OG	Raumhöhe	2.54 m
Wohnfläche	118.7 m ²	Keller	9.6 m ²



1:100



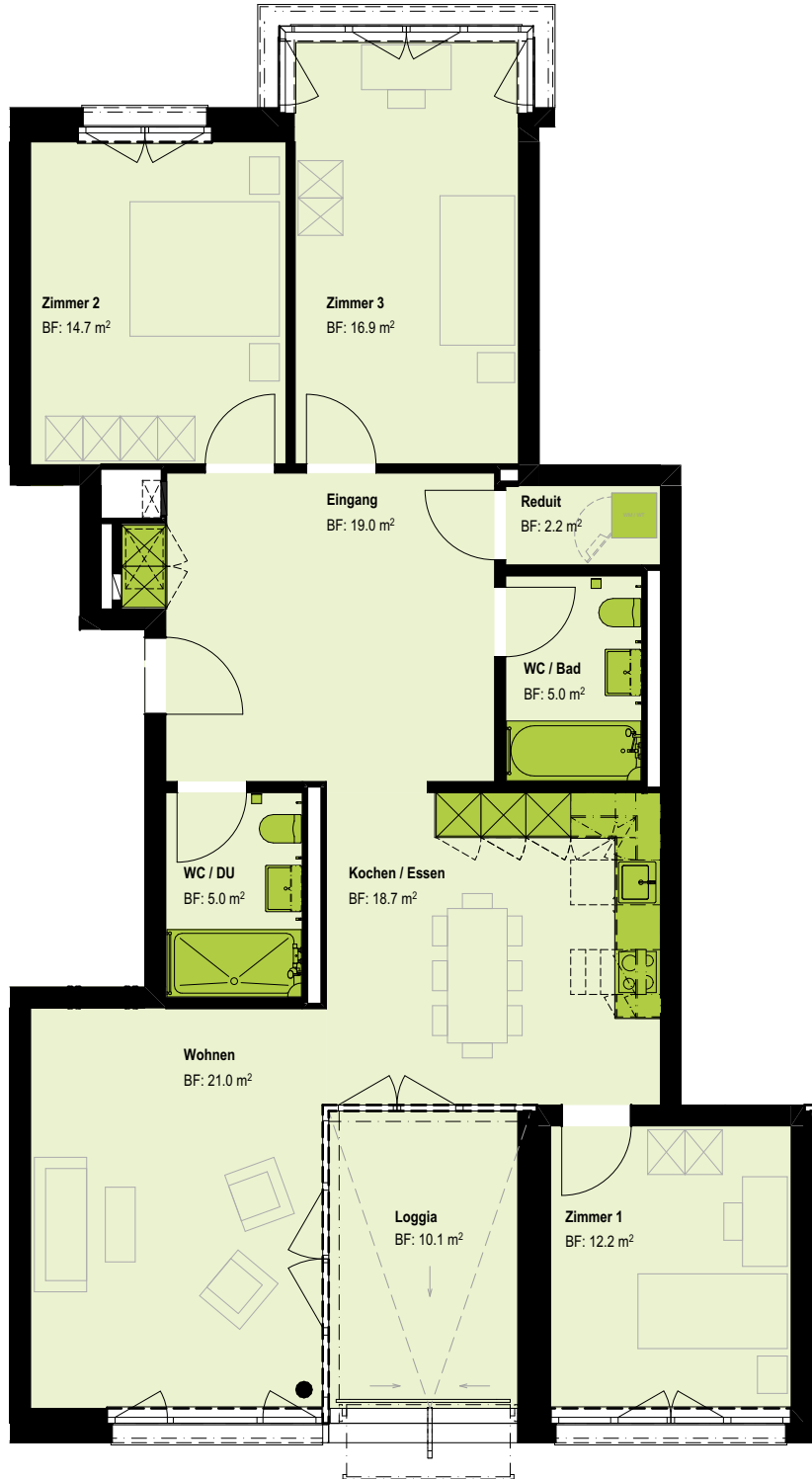
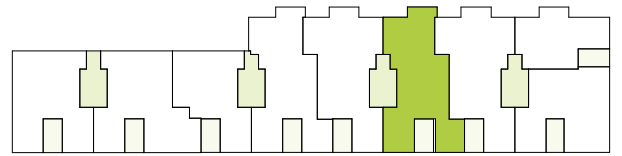
A4

4.5 Zimmer-Wohnung

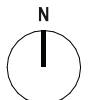
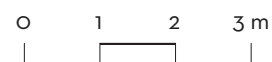
Seestrasse 293 B | 8804 Au ZH



Wohnungsnr.	SEE293B_10402	Loggia / Balkon	10.1 m ²
Geschoss	4.OG	Raumhöhe	2.54 m
Wohnfläche	114.8 m ²	Keller	8.1 m ²



1:100



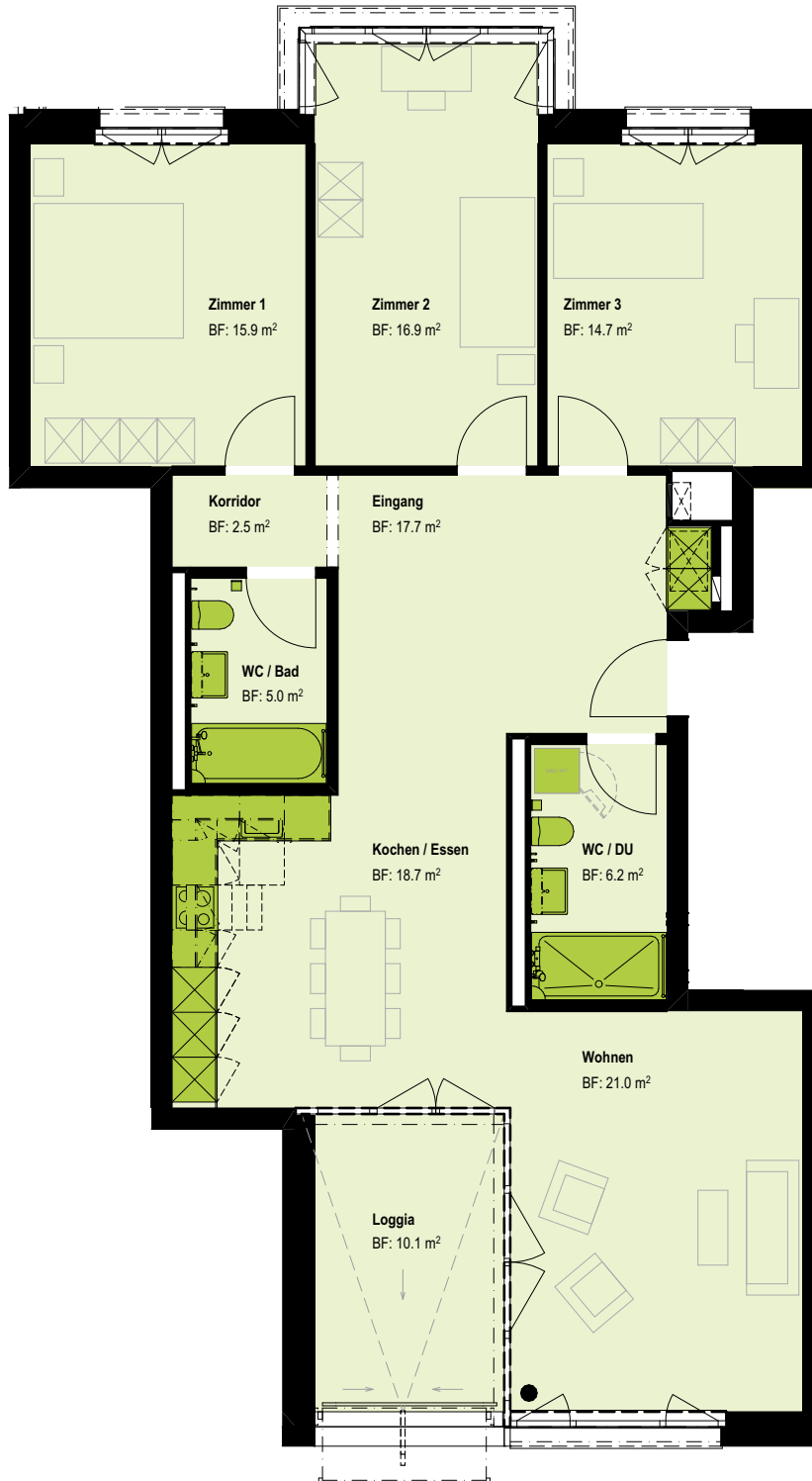
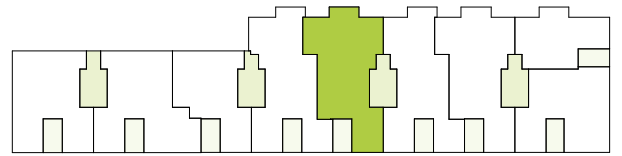
A4

4.5 Zimmer-Wohnung

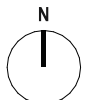
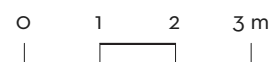
Seestrasse 293 B | 8804 Au ZH



Wohnungsnr.	SEE293B_10501	Loggia / Balkon	10.1 m ²
Geschoss	5.OG	Raumhöhe	2.54 m
Wohnfläche	118.7 m ²	Keller	8.1 m ²



1:100



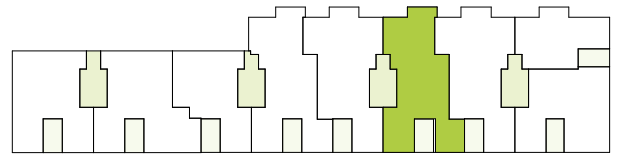
A4

4.5 Zimmer-Wohnung

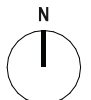
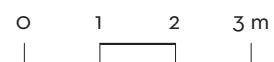
Seestrasse 293 B | 8804 Au ZH



Wohnungsnr.	SEE293B_10502	Loggia / Balkon	10.1 m ²
Geschoss	5.OG	Raumhöhe	2.54 m
Wohnfläche	114.8 m ²	Keller	8.1 m ²



1:100



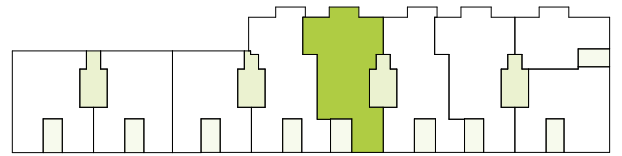
A4

4.5 Zimmer-Wohnung

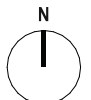
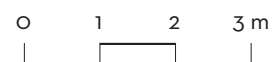
Seestrasse 293 B | 8804 Au ZH



Wohnungsnr.	SEE293B_10601	Loggia / Balkon	10.1 m ²
Geschoss	6.OG	Raumhöhe	2.79 m
Wohnfläche	118.7 m ²	Keller	8.1 m ²



1:100



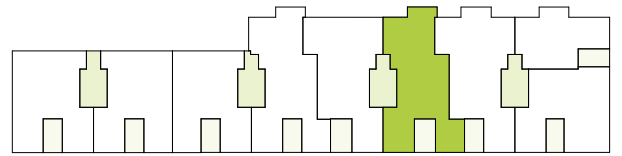
A4

4.5 Zimmer-Wohnung

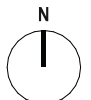
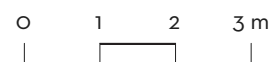
Seestrasse 293 B | 8804 Au ZH



Wohnungsnr.	SEE293B_10602	Loggia / Balkon	10.1 m ²
Geschoss	6.OG	Raumhöhe	2.79 m
Wohnfläche	114.8 m ²	Keller	8.1 m ²



1:100



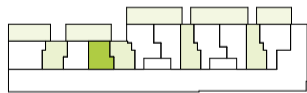
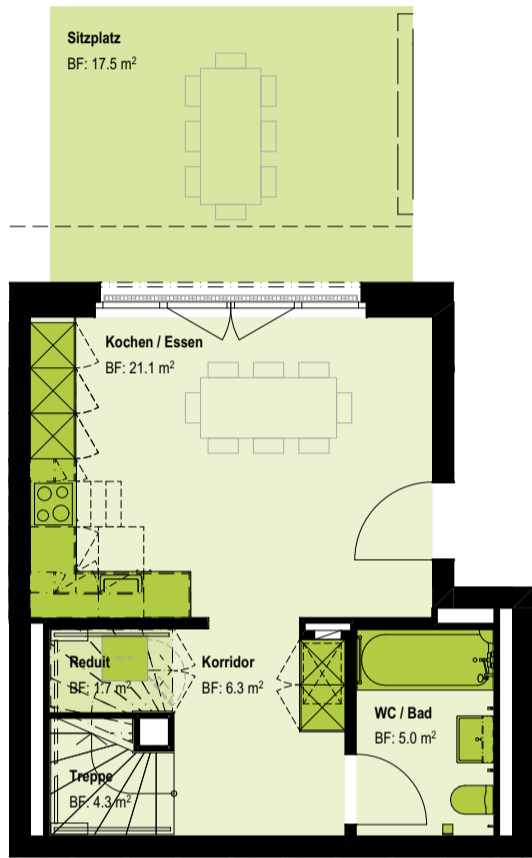
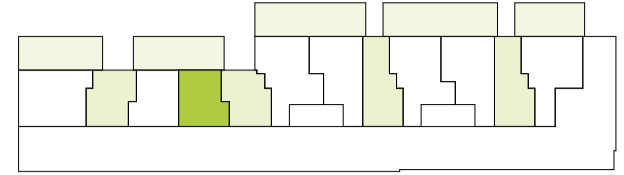
A4

5.5 Zimmer-Maisonette

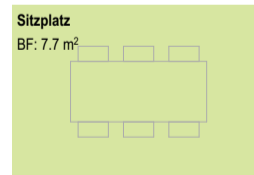
Seestrasse 293 C | 8804 Au ZH



Wohnungsnr.	SEE293C_10001	Loggia / Balkon	11.2 m ²
Geschoss	EG	Sitzplatz	25.2 m ²
Wohnfläche	131.6 m ²	Raumhöhe	2.54 m
		Keller	8.1 m ²



EG



1. OG

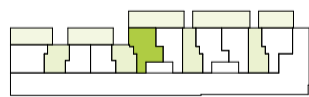
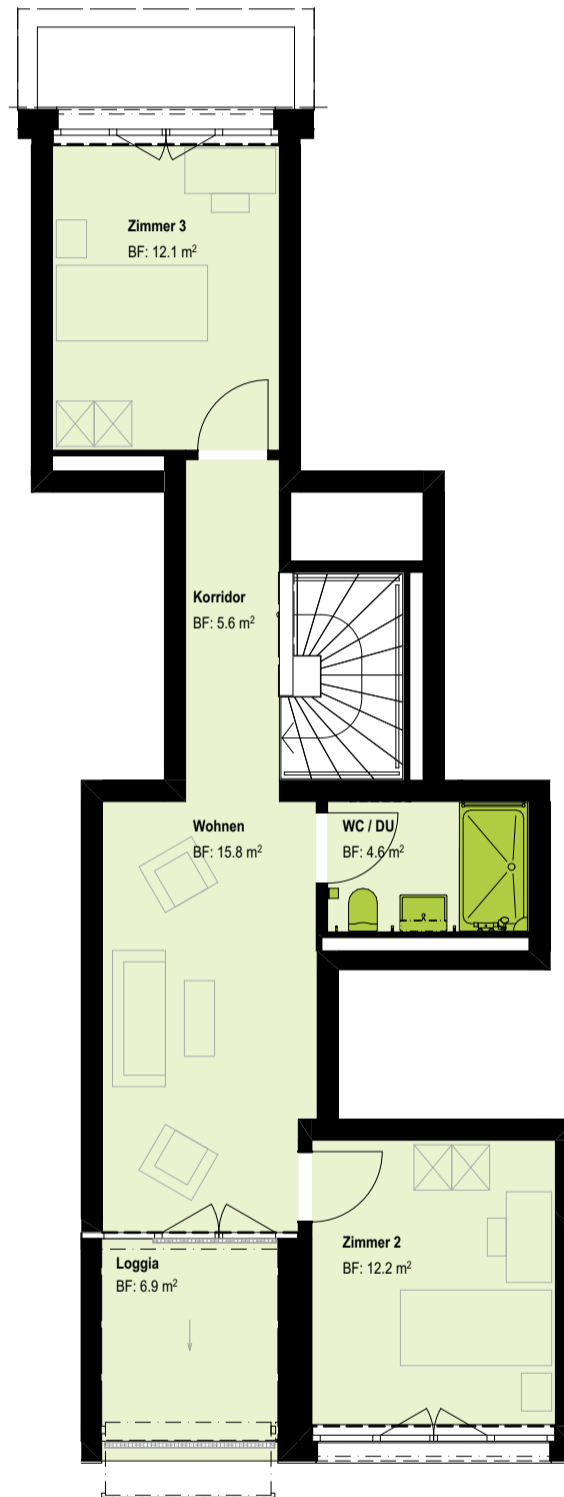
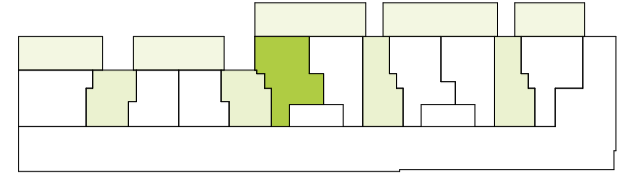


4.5 Zimmer-Maisonette

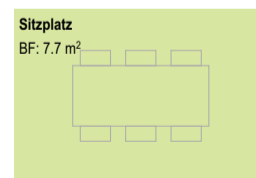
Seestrasse 293 C | 8804 Au ZH



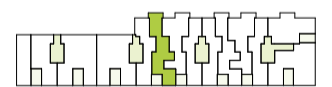
Wohnungsnr.	SEE293C_10002	Loggia / Balkon	6.9 m ²
Geschoss	EG	Sitzplatz	31.1 m ²
Wohnfläche	108.2 m ²	Raumhöhe	2.54 m
		Keller	8.3 m ²



EG



Sitzplatz
BF: 7.7 m²



1. OG

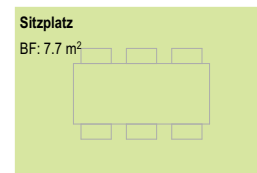
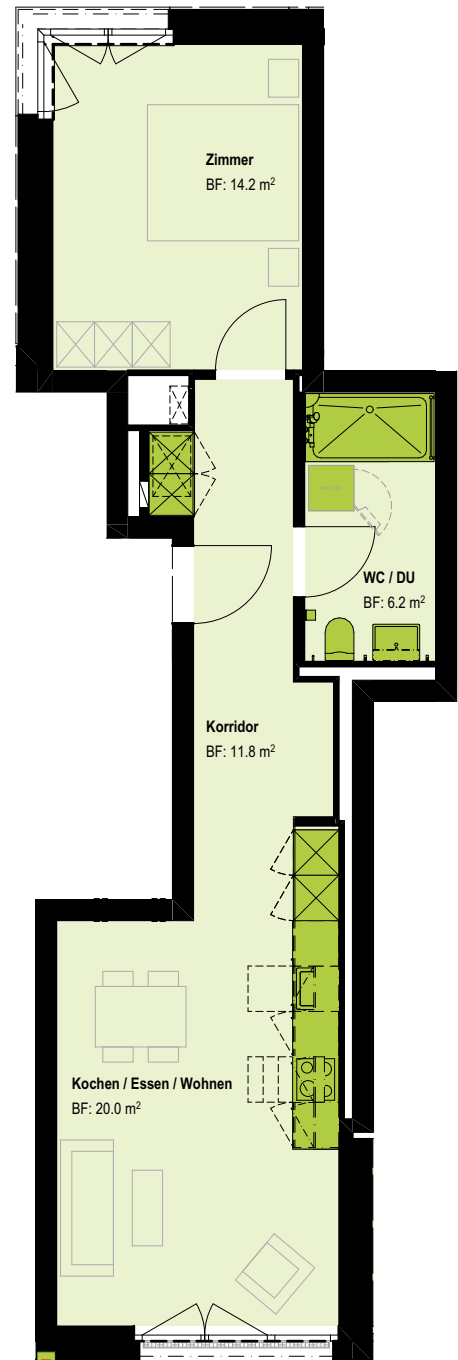
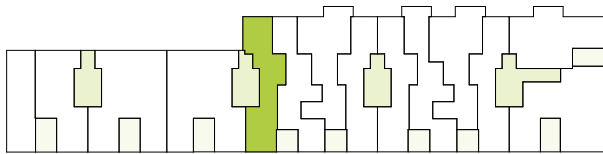


2.5 Zimmer-Wohnung

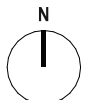
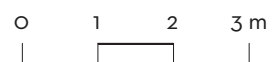
Seestrasse 293 C | 8804 Au ZH



Wohnungsnr.	SEE293C_10101	Sitzplatz	7.7 m ²
Geschoss	1.OG	Raumhöhe	2.69 m
Wohnfläche	52.2 m ²	Keller	8.3 m ²



1:100



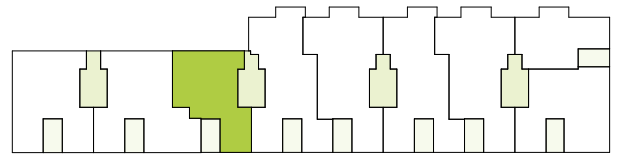
A4

3.5 Zimmer-Wohnung

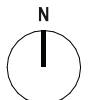
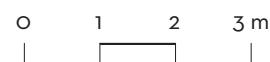
Seestrasse 293 C | 8804 Au ZH



Wohnungsnr.	SEE293C_10201	Loggia / Balkon	10.1 m ²
Geschoss	2.OG	Raumhöhe	2.54 m
Wohnfläche	81.5 m ²	Keller	8.3 m ²



1:100



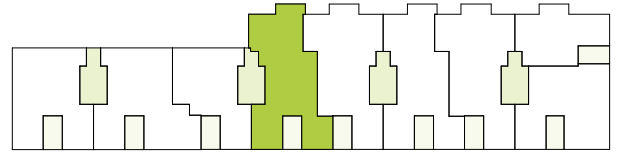
A4

4.5 Zimmer-Wohnung

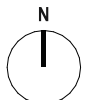
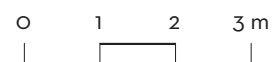
Seestrasse 293 C | 8804 Au ZH



Wohnungsnr.	SEE293C_10202	Loggia / Balkon	10.1 m ²
Geschoss	2.OG	Raumhöhe	2.54 m
Wohnfläche	112.5 m ²	Keller	8.3 m ²



1:100



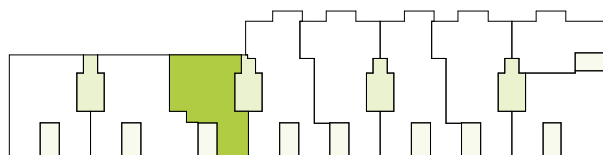
A4

3.5 Zimmer-Wohnung

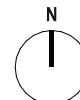
Seestrasse 293 C | 8804 Au ZH



Wohnungsnr.	SEE293C_10301	Loggia / Balkon	10.1 m ²
Geschoss	3.OG	Raumhöhe	2.54 m
Wohnfläche	81.5 m ²	Keller	8.3 m ²



1:100



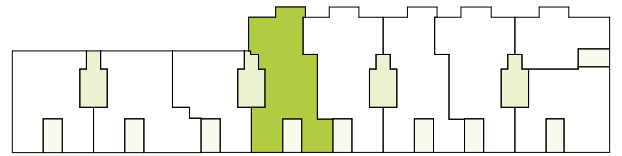
A4

4.5 Zimmer-Wohnung

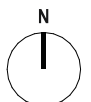
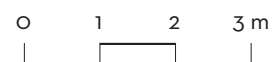
Seestrasse 293 C | 8804 Au ZH



Wohnungsnr.	SEE293C_10302	Loggia / Balkon	10.1 m ²
Geschoss	3.OG	Raumhöhe	2.54 m
Wohnfläche	112.5 m ²	Keller	10.4 m ²



1:100



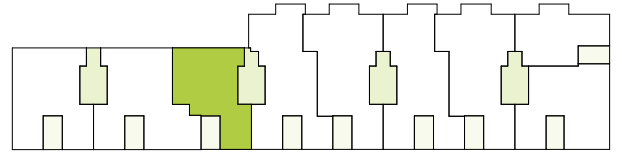
A4

5.5 Zimmer-Wohnung

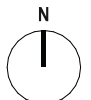
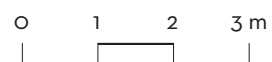
Seestrasse 293 C | 8804 Au ZH



Wohnungsnr.	SEE293C_10401	Loggia / Balkon	10.1 m ²
Geschoss	4.OG	Raumhöhe	2.54 m
Wohnfläche	81.5 m ²	Keller	8.1 m ²



1:100



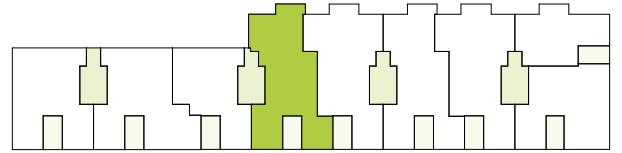
A4

4.5 Zimmer-Wohnung

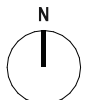
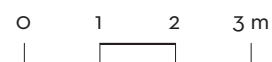
Seestrasse 293 C | 8804 Au ZH



Wohnungsnr.	SEE293C_10402	Loggia / Balkon	10.1 m ²
Geschoss	4.OG	Raumhöhe	2.54 m
Wohnfläche	112.5 m ²	Keller	10.4 m ²



1:100



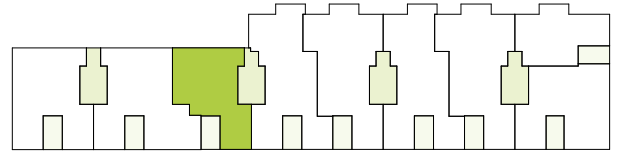
A4

4.5 Zimmer-Wohnung

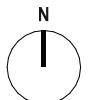
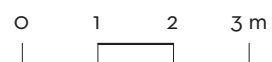
Seestrasse 293 C | 8804 Au ZH



Wohnungsnr.	SEE293C_10501	Loggia / Balkon	10.1 m ²
Geschoss	5.OG	Raumhöhe	2.54 m
Wohnfläche	81.5 m ²	Keller	8.2 m ²



1:100



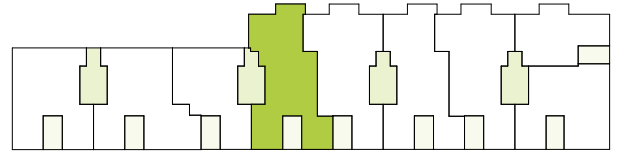
A4

4.5 Zimmer-Wohnung

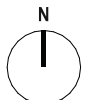
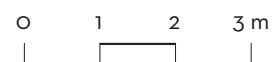
Seestrasse 293 C | 8804 Au ZH



Wohnungsnr.	SEE293C_10502	Loggia / Balkon	10.1 m ²
Geschoss	5.OG	Raumhöhe	2.54 m
Wohnfläche	112.5 m ²	Keller	8.1 m ²



1:100



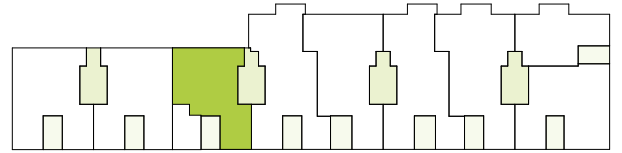
A4

4.5 Zimmer-Wohnung

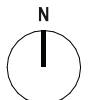
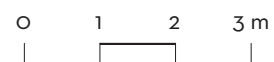
Seestrasse 293 C | 8804 Au ZH



Wohnungsnr.	SEE293C_10601	Loggia / Balkon	10.1 m ²
Geschoss	6.OG	Raumhöhe	2.79 m
Wohnfläche	81.5 m ²	Keller	8.3 m ²



1:100



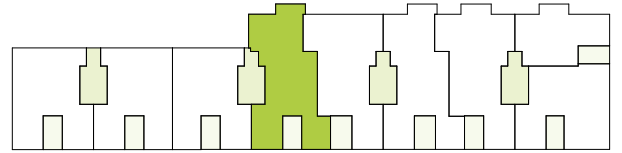
A4

4.5 Zimmer-Wohnung

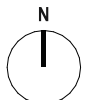
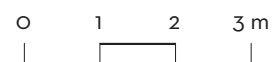
Seestrasse 293 C | 8804 Au ZH



Wohnungsnr.	SEE293C_10602	Loggia / Balkon	10.1 m ²
Geschoss	6.OG	Raumhöhe	2.79 m
Wohnfläche	112.5 m ²	Keller	8.1 m ²



1:100



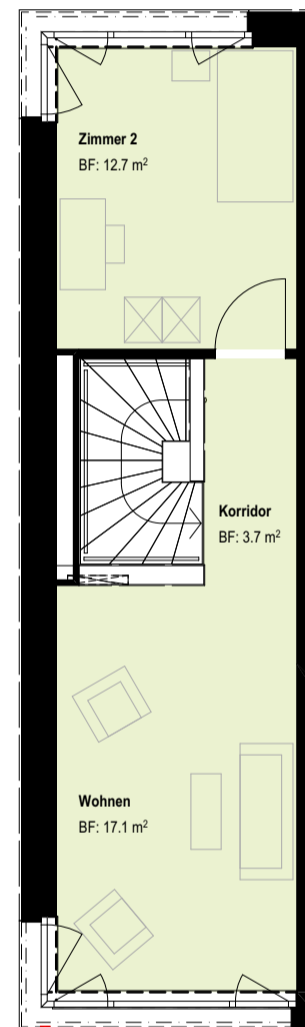
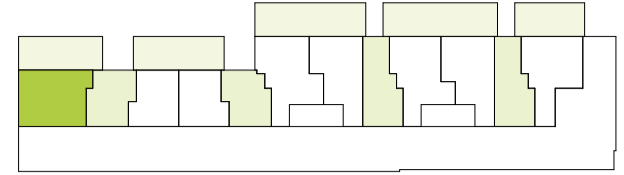
A4

3.5 Zimmer-Maisonette

Seestrasse 293 D | 8804 Au ZH



Wohnungsnr.	SEE293D_10001	Sitzplatz	34.7 m ²
Geschoss	EG	Raumhöhe	2.54 m
Wohnfläche	88.4 m ²	Keller	8.5 m ²



EG



1. OG

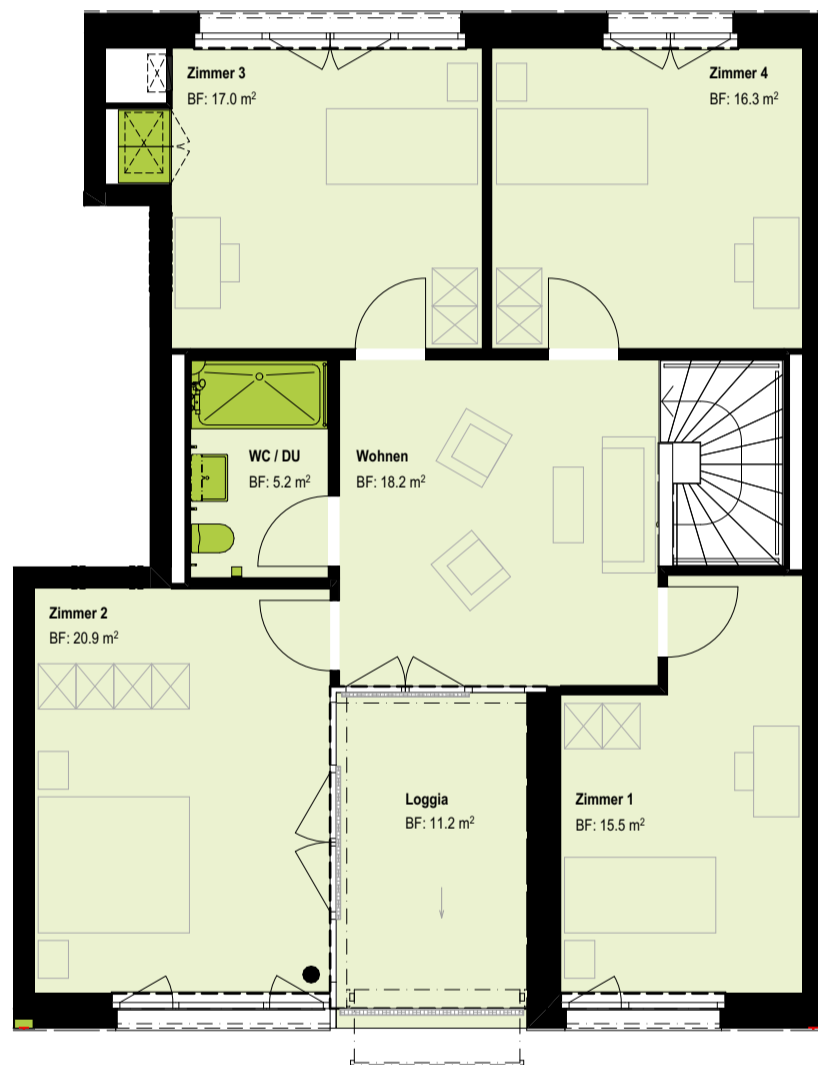
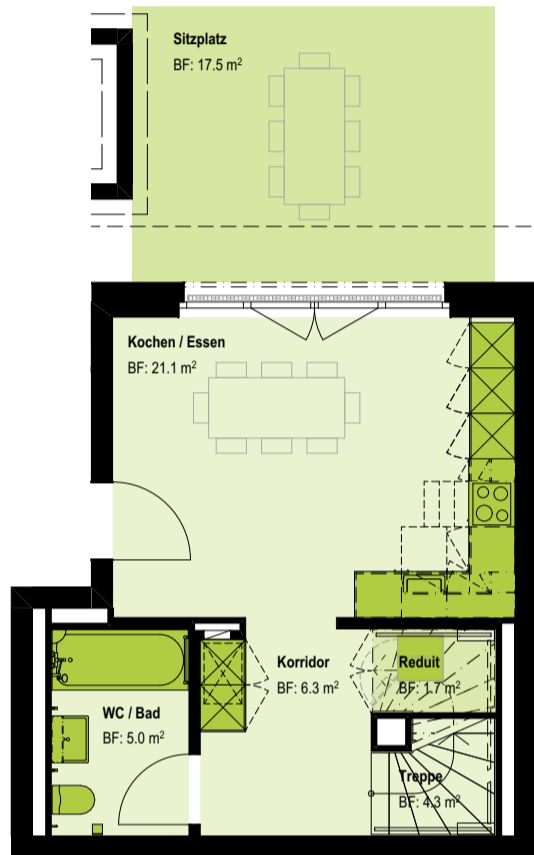
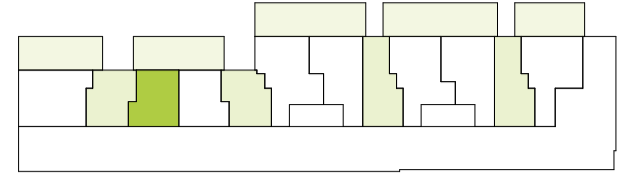


5.5 Zimmer-Maisonette

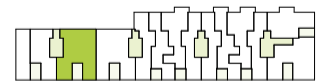
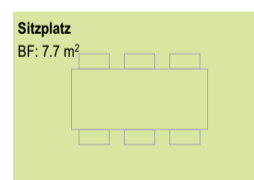
Seestrasse 293 D | 8804 Au ZH



Wohnungsnr.	SEE293D_10002	Loggia / Balkon	11.2 m ²
Geschoss	EG	Sitzplatz	25.2 m ²
Wohnfläche	131.6 m ²	Raumhöhe	2.54 m
		Keller	8.3 m ²



EG



1. OG

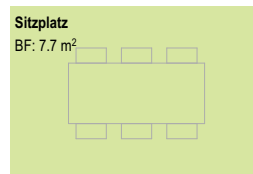
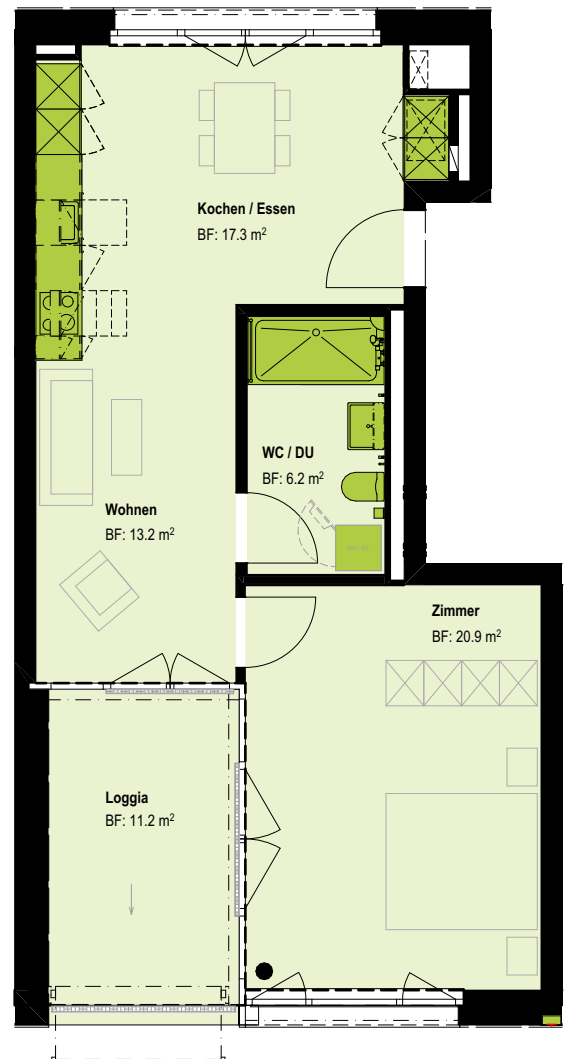
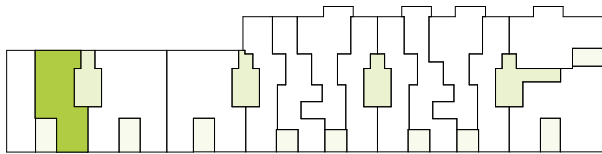


2.5 Zimmer-Wohnung

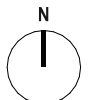
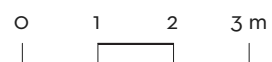
Seestrasse 293 D | 8804 Au ZH



Wohnungsnr.	SEE293D_10101	Loggia / Balkon	11.2 m ²
Geschoss	1.OG	Sitzplatz	7.7 m ²
Wohnfläche	57.7 m ²	Raumhöhe	2.69 m
		Keller	8.3 m ²



1:100



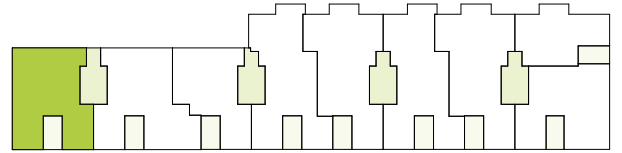
A4

4.5 Zimmer-Wohnung

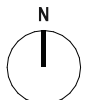
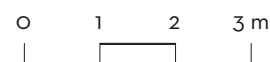
Seestrasse 293 D | 8804 Au ZH



Wohnungsnr.	SEE293D_10201	Loggia / Balkon	10.1 m ²
Geschoss	2.OG	Raumhöhe	2.54 m
Wohnfläche	96.8 m ²	Keller	8.3 m ²



1:100



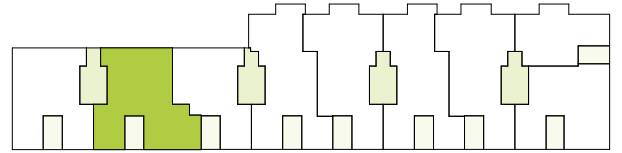
A4

5.5 Zimmer-Wohnung

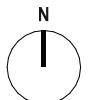
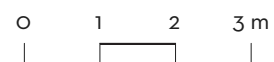
Seestrasse 293 D | 8804 Au ZH



Wohnungsnr.	SEE293D_10202	Loggia / Balkon	10.1 m ²
Geschoss	2.OG	Raumhöhe	2.54 m
Wohnfläche	112.1 m ²	Keller	8.3 m ²



1:100



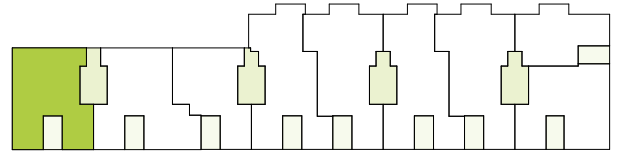
A4

4.5 Zimmer-Wohnung

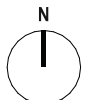
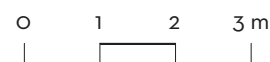
Seestrasse 293 D | 8804 Au ZH



Wohnungsnr.	SEE293D_10301	Loggia / Balkon	10.1 m ²
Geschoss	3.OG	Raumhöhe	2.54 m
Wohnfläche	96.8 m ²	Keller	8.1 m ²



1:100



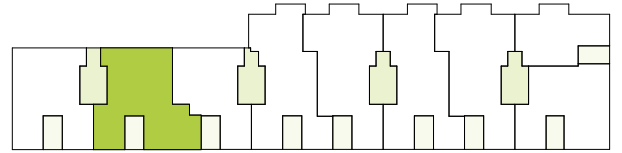
A4

5.5 Zimmer-Wohnung

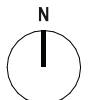
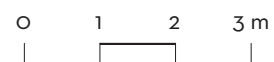
Seestrasse 293 D | 8804 Au ZH



Wohnungsnr.	SEE293D_10302	Loggia / Balkon	10.1 m ²
Geschoss	3.OG	Raumhöhe	2.54 m
Wohnfläche	112.1 m ²	Keller	9.4 m ²



1:100



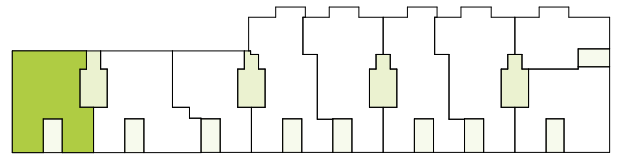
A4

4.5 Zimmer-Wohnung

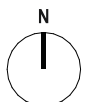
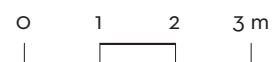
Seestrasse 293 D | 8804 Au ZH



Wohnungsnr.	SEE293D_10401	Loggia / Balkon	10.1 m ²
Geschoss	4.OG	Raumhöhe	2.54 m
Wohnfläche	96.8 m ²	Keller	8.6 m ²



1:100



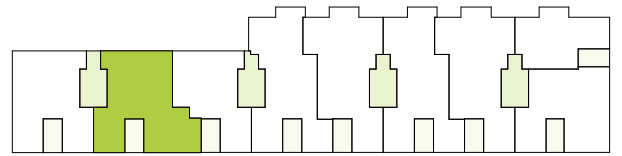
A4

5.5 Zimmer-Wohnung

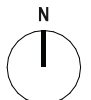
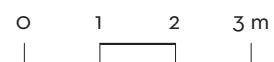
Seestrasse 293 D | 8804 Au ZH



Wohnungsnr.	SEE293D_10402	Loggia / Balkon	10.1 m ²
Geschoss	4.OG	Raumhöhe	2.54 m
Wohnfläche	112.1 m ²	Keller	8.1 m ²



1:100



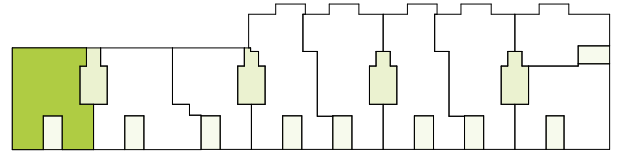
A4

4.5 Zimmer-Wohnung

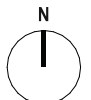
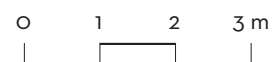
Seestrasse 293 D | 8804 Au ZH



Wohnungsnr.	SEE293D_10501	Loggia / Balkon	10.1 m ²
Geschoss	5.OG	Raumhöhe	2.54 m
Wohnfläche	96.8 m ²	Keller	8.5 m ²



1:100



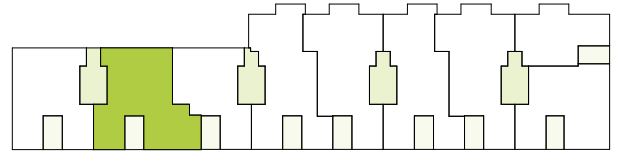
A4

5.5 Zimmer-Wohnung

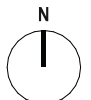
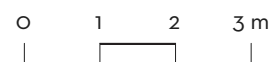
Seestrasse 293 D | 8804 Au ZH



Wohnungsnr.	SEE293D_10502	Loggia / Balkon	10.1 m ²
Geschoss	5.OG	Raumhöhe	2.54 m
Wohnfläche	112.1 m ²	Keller	8.2 m ²



1:100



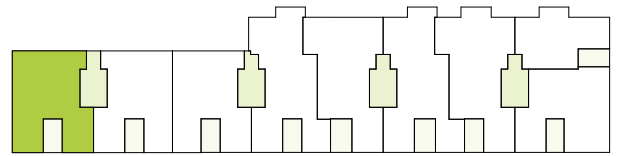
A4

4.5 Zimmer-Wohnung

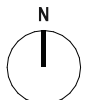
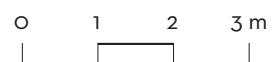
Seestrasse 293 D | 8804 Au ZH



Wohnungsnr.	SEE293D_10601	Loggia / Balkon	10.1 m ²
Geschoss	6.OG	Raumhöhe	2.79 m
Wohnfläche	96.8 m ²	Keller	8.6 m ²



1:100



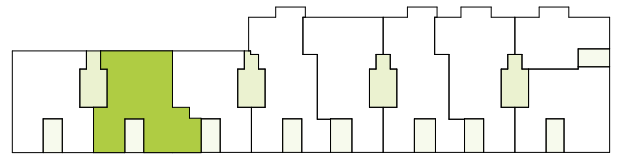
A4

5.5 Zimmer-Wohnung

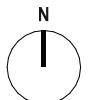
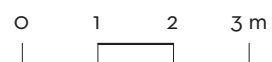
Seestrasse 293 D | 8804 Au ZH



Wohnungsnr.	SEE293D_10602	Loggia / Balkon	10.1 m ²
Geschoss	6.OG	Raumhöhe	2.79 m
Wohnfläche	112.1 m ²	Keller	8.3 m ²



1:100



A4